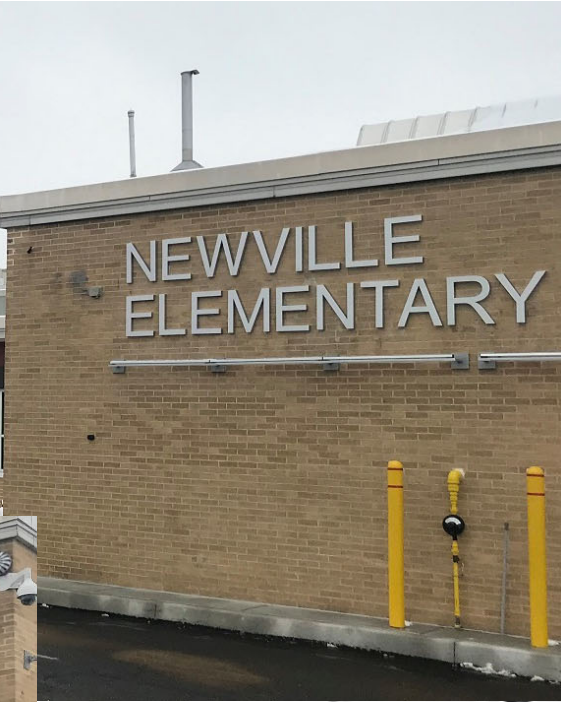


Building & Property Committee

- ❑ Review Newville Project
- ❑ Master Project List
- ❑ PennDOT Grant Update
- ❑ Chartwells Budget
- ❑ Hazardous Walking Routes
- ❑ Emergency Utility Procedures & Signs
- ❑ Committee Questions/Discussion

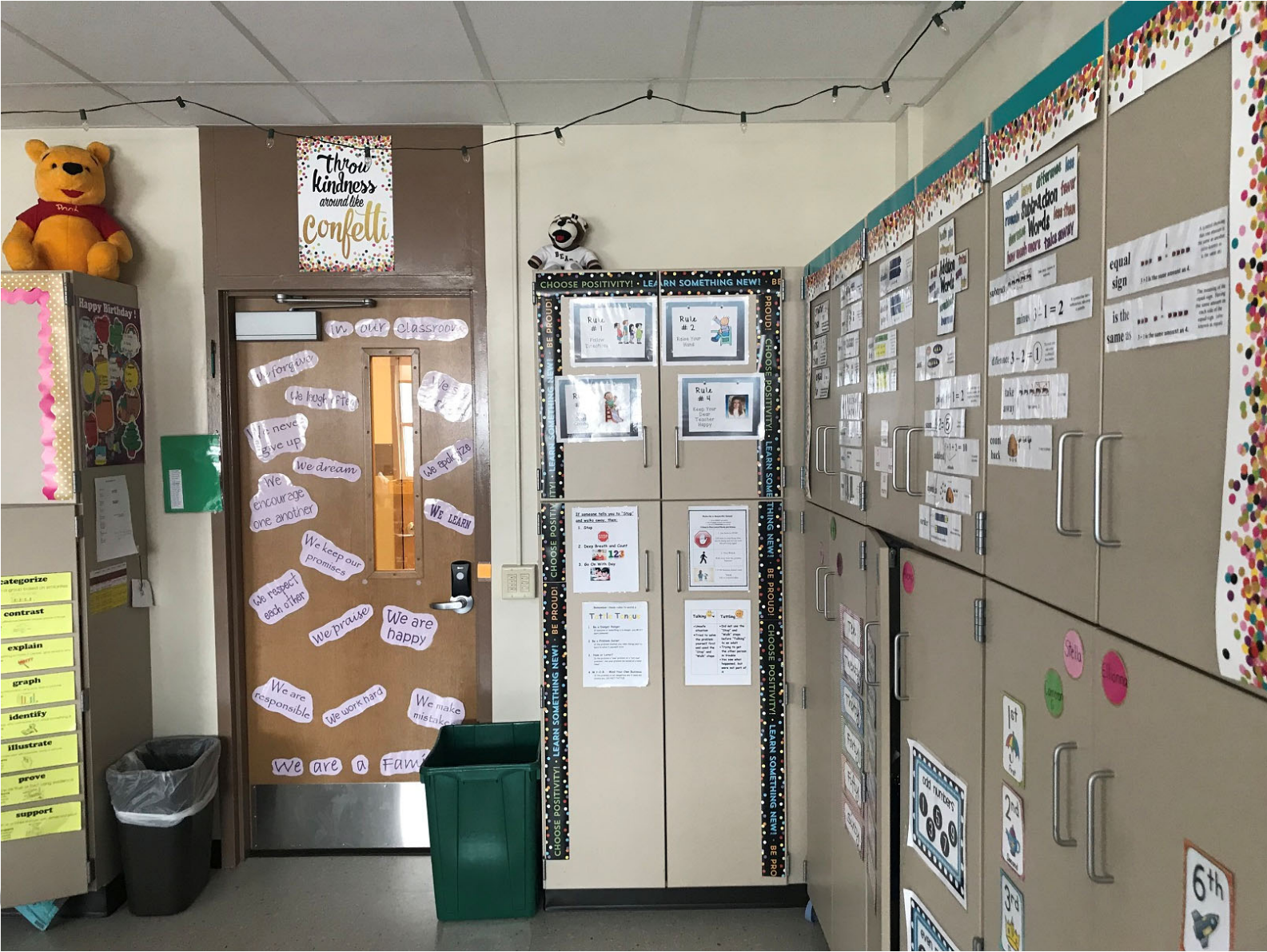
19 03 04





If you have time, please
DONATE to help
we will DONATE to you
Or you can help us
DONATE to help us
DONATE to help us
want to DONATE





- Happy Birthday!
- categorize
 - contrast
 - explain
 - graph
 - identify
 - illustrate
 - prove
 - support

CHOOSE POSITIVITY! LEARN SOMETHING NEW!

Rule #1
Follow directions

Rule #2
Raise your hand

Rule #3
Keep your mouth closed

Rule #4
Be kind

T.T.T. Tnu

1. Subtract 10 from 100 and add zero. Then:
1. 100 - 10 = 90

2. Subtract 10 from 100 and add zero. Then:
100 - 10 = 90

3. Subtract 10 from 100 and add zero. Then:
100 - 10 = 90

4. Subtract 10 from 100 and add zero. Then:
100 - 10 = 90

5. Subtract 10 from 100 and add zero. Then:
100 - 10 = 90

6. Subtract 10 from 100 and add zero. Then:
100 - 10 = 90

7. Subtract 10 from 100 and add zero. Then:
100 - 10 = 90

8. Subtract 10 from 100 and add zero. Then:
100 - 10 = 90

9. Subtract 10 from 100 and add zero. Then:
100 - 10 = 90

10. Subtract 10 from 100 and add zero. Then:
100 - 10 = 90

equal sign is the same as

3 - 1 = 2

3 - 2 = 1

3 + 1 = 4

3 + 2 = 5

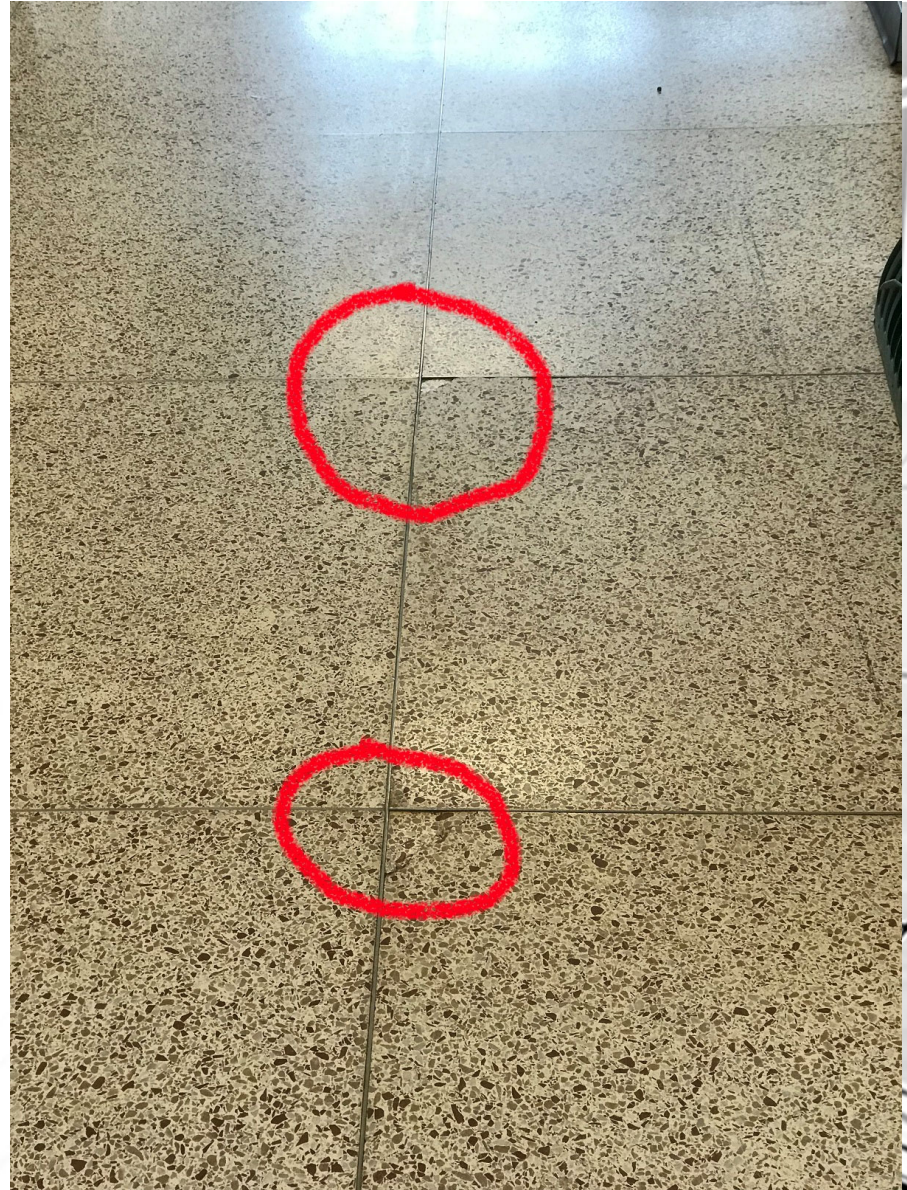
6th













Pri	Bldg	Description	Amount
1	HS	LED Gym Lighting, Labor Included	\$19,323.00
1	MS	LED Gym Lighting, Labor Included	\$8,856.00
1	MR	LED Gym Lighting, Labor Included	\$5,487.00
1	All	Re-key District Locks	\$80,000
1	IT	Veeam Backup SAN and host server	\$75,000
1	MS	Interactive Panel TVs	\$500,000
1	ALL	Outdoor WIFI Access Points	\$75,000
1	IT	Fiber Study (to OF & NV)	\$27,500
Priority 1 Total =			791,166
2	HS	Interactive Panel TVs	\$750,000
2	HS	Shelter Lockdown System	18,750
2	HS	address cooling issue @ storage area / file room in bus dept.	26,000
2	MS	Shelter lockdown	13,750
2	OF	Administration office renovations	70,000
2	MR	Admin Reno - Check-in window & door	7,500
2	IT	Core Network Switch	50,000
2	IT	Servers	30,000
Priority 2 Total =			966,000
3	HS	Update cat6 network cabling	115,000
3	HS	Bells Clocks Intercom	175,000
3	HS	Server	15,000
3	MS	Replace 110 Heat Pumps (10-15 yr life - installed 2005)	330,000
3	HS	STEM Lab	246,252
3	H/MS	Flexible Seating	500,000
3	OF	New Bathroom Partitions	25,000
3	IT	Core Switch Replacement	50,000
Priority 3 Total =			1,456,252
4	OF	Roof replace/restore	750,000
4	IT	eRate cat 2 - District contribution (Wi-Fi & network switching)	250,000
4	MR	Replace Heat Pumps in Room	200,000
4	IT	District Office SAN	75,000
4	IT	Server	15,000
4	IT	Fiber to OF/NV	750,000
4	DAO	Insulate DAO roof	100,000
Priority 4 Total =			\$2,140,000
Total All Projects =			\$5,353,418

Capital Projects List

PennDOT Grant

<https://www.bigspringd.org/Page/2487>

The screenshot shows the Big Spring School District website. The header features the district logo, name, and tagline "Shaping The Future, One Student At A Time". A navigation menu includes "Home", "Our District", "School Board", "Services", "Curriculum", "Athletics", "Parents", "Community", "Construction" (highlighted with a red circle), and "Office". A "Select a School" dropdown menu is visible in the top right.

The main content area displays the breadcrumb trail: Home > Construction > Construction Projects > 2019 Projects > Pedestrian Safety Project. The page title is "PennDOT Grant - Pedestrian Safety Improvements Project".

On the left sidebar, under "Construction Projects", there is a list of projects:

- Big Spring Construction, Renovation & Repair Projects
- 2019 Projects
 - Mt. Rock - 2019
 - Middle School - 2019
 - High School - 2019
 - Oak Flat - 2019
 - Pedestrian Safety Project**

The main content area lists the following links for the "PennDOT Grant - Pedestrian Safety Improvements Project":

- Final Project Approval (w/ drawings)
- Project Summary
- Original Grant Award Letter (2014)

Meal Pricing	<i>proposed</i>				
	<u>2015-16</u>	<u>2016-17</u>	<u>2017-18</u>	<u>2018-19</u>	<u>2019-20</u>
Elem Lunch	\$2.55	\$2.60	\$2.60	\$2.65	\$2.70
Secondary Lunch	\$2.70	\$2.75	\$2.75	\$2.80	\$2.85
Adult Breakfast	\$2.25	\$2.50	\$2.50	\$2.50	\$2.50
Adult Lunch	\$3.60	\$3.75	\$3.75	\$3.80	\$3.90
Breakfast (all students)	\$1.50	\$1.50	\$1.50	\$1.50	\$1.50
Milk	\$0.60	\$0.60	\$0.60	\$0.60	\$0.60
YB/Headstart Lunch	\$5.80	\$2.90	\$3.00	\$3.00	\$3.05
YB/Headstart Breakfast			\$1.75	\$1.75	\$1.80

Chartwells Budget & Meal Pricing

State & Fed Reimbursement	Free	Reduced	Paid
<u>Lunch</u>			
NSLP	\$ 3.31	\$ 2.91	\$ 0.31
Fed Performace Rate	\$ 0.06	\$ 0.06	\$ 0.06
PA Reimbursement	\$ 0.10	\$ 0.10	\$ 0.10
	\$ 3.47	\$ 3.07	\$ 0.47
<u>Breakfast</u>			
School Breakfast Prgm	\$ 1.79	\$ 1.49	\$ 0.31
Fed Performace Rate	\$ 0.06	\$ 0.06	\$ 0.06
PA Reimbursement	\$ 0.04	\$ 0.04	\$ 0.04
	\$ 1.89	\$ 1.59	\$ 0.41



Hazardous Walking Routes Study

<https://www.bigspringsd.org/Page/2471>

Business Office

- PA-363 for 2017-18
- Historical Financial Information
- Special Presentations
- Office Directory
- Job Descriptions
- Walking Routes Study

Home > Services > Business Office > Walking Routes Study

Walking Routes Study - 2019

To maintain reimbursement from the Commonwealth, students who live within 2 miles of a secondary school and 1.5 miles from an elementary school are expected to walk. The District is required to have walking routes declared as hazardous by PennDOT to claim bus reimbursement for those students.

See handout - [How Hazardous Walking Routes are Determined](#) and request for [Student Walking Route Study](#) from PennDOT.

The initial proposed walking routes for each school are:

High School

[HS WR-1](#) [HS WR-2](#) [HS WR-3](#) [HS WR-4](#)

Middle School

[MS WR-1](#) [MS WR-2](#) [MS WR-3](#) [MS WR-4](#)

Mt. Rock ES

[MR WR-1](#) [MR WR-2](#) [MR WR-3](#) [MR WR-4](#)

Newville ES

[NV WR-1](#) [NV WR-2](#) [NV WR-3](#) [NV WR-4](#)

[NV WR-5](#) [NV WR-6](#) [NV WR-7](#) [NV WR-8](#)

Oak Flat ES

[OF WR-1](#) [OF WR-2](#)

download all as [one file here](#)

[Traffic Counts](#) for each Route

Emergency Utility Procedures

Sprinkler System Emergency Shut-off

Instructions

First Shut it down.

Then call the first name on list and continue down the list until you receive an answer.

Ask that person for further instructions.

Tim Drawbaugh – (717) 226-1503

Josh Putt – (717) 636-5685

Rick Gilliam – (717) 226-1509

Cheri Frank – (717) 601-0021

Doug Lautsbaugh (717) 440-1525

Triangle (717) 241-9662 or (717) 422-4815 or
(717) 422-4493 or (717) 979-9853

**Main Electrical
Emergency
Shut-Off**

FOR EMERGENCY USE ONLY
DO NOT RESET THIS SWITCH
IF YOU RESET THIS SWITCH
AFTER A TRIP, CONTACT THE
ELECTRICAL CONTRACTOR
FOR INVESTIGATION AND
REPAIR.

FOR EMERGENCY USE ONLY
DO NOT RESET THIS SWITCH
IF YOU RESET THIS SWITCH
AFTER A TRIP, CONTACT THE
ELECTRICAL CONTRACTOR
FOR INVESTIGATION AND
REPAIR.

FINAL

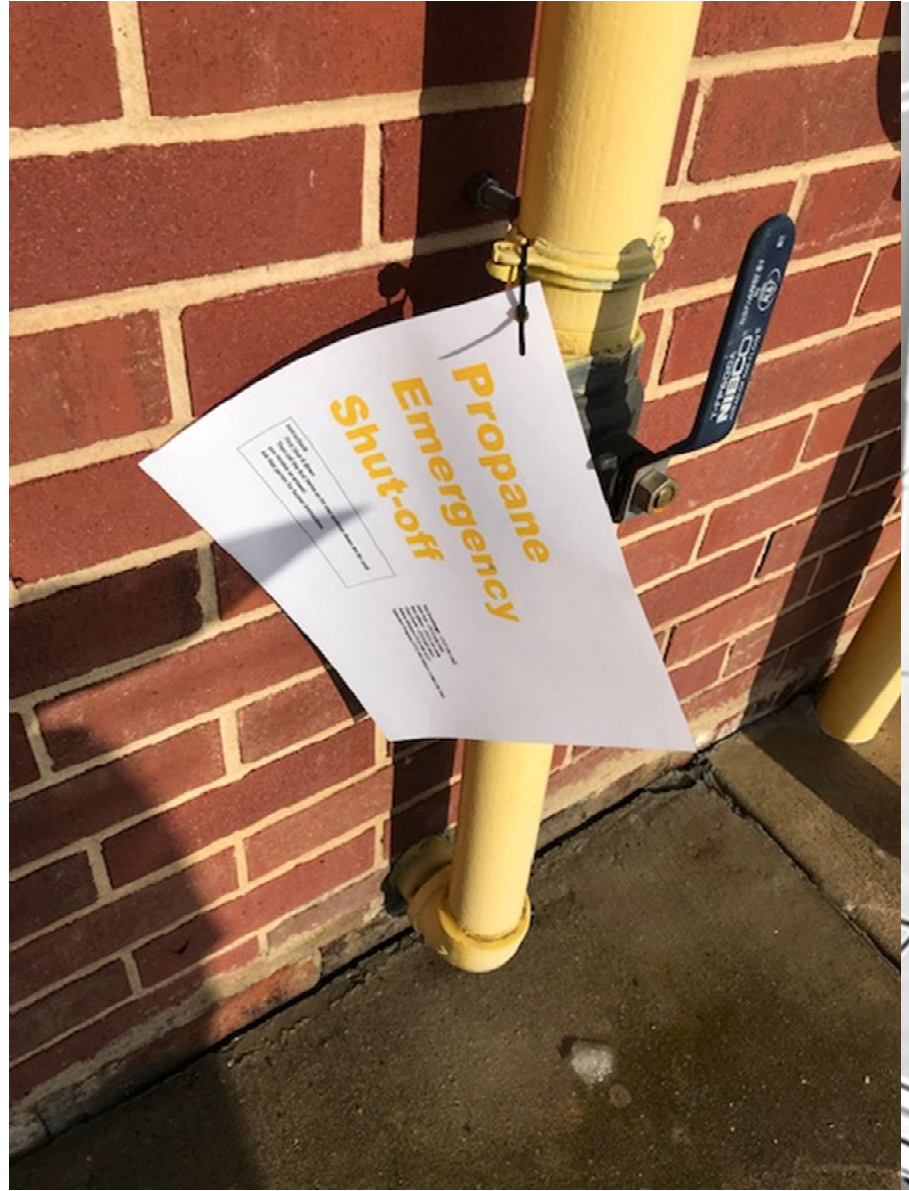
FOR EMERGENCY USE ONLY
DO NOT RESET THIS SWITCH
IF YOU RESET THIS SWITCH
AFTER A TRIP, CONTACT THE
ELECTRICAL CONTRACTOR
FOR INVESTIGATION AND
REPAIR.



**Propane
Emergency
Shut-off**

FOR EMERGENCY USE ONLY
DO NOT RESET THIS SWITCH
IF YOU RESET THIS SWITCH
AFTER A TRIP, CONTACT THE
ELECTRICAL CONTRACTOR
FOR INVESTIGATION AND
REPAIR.

FOR EMERGENCY USE ONLY
DO NOT RESET THIS SWITCH
IF YOU RESET THIS SWITCH
AFTER A TRIP, CONTACT THE
ELECTRICAL CONTRACTOR
FOR INVESTIGATION AND
REPAIR.



Main Electrical Emergency Shut-Off

Instructions

First Shut it down.
Then call the first name on list and continue down the list until you receive
an answer.
Ask that person for further instructions.

Tim Drawbaugh – (717) 226-1503
Josh Putt – (717) 636-5685
Rick Gilliam – (717) 226-1509
Cheri Frank – (717) 601-0021
Doug Lautsbaugh (717) 440-1525
PPL Emergency 1-800-342-5775

Questions ?