

**HIGHWAY OCCUPANCY PERMIT APPLICATION**

**WEST PENNSBORO TOWNSHIP, CUMBERLAND COUNTY,  
PENNSYLVANIA**

DATE RECEIVED: Nov 12 2018  
DATE REVIEWED: Nov 20, 2018

APPLICANT: Big Spring School District  
FIRM/COMPANY: Big Spring School District  
ADDRESS: 45 Mount Rock Road, Newville, PA 17241  
EMAIL: RGILLIAM@bigspring.k12.pa.us  
PHONE/FAX NUMBER: (717) 776-2000 Ext. 1601  
PERSON TO CONTACT: Rick Gilliam

\*LOCATION OF H.O.P. REQUEST: School House Rd. (T-408)  
One (1) School Zone Speed Limit Flasher at STA 31+88.  
See sheet 5 of 16 of the attached plans.

DESCRIPTION OF H.O.P. ACTIVITY: Installation of one (1) Solar Powered  
School Zone Speed Limit Flasher.

WEST PENNSBORO TOWNSHIP HAS REVIEWED THIS HIGHWAY OCCUPANCY PERMIT AND  
HAS DETERMINED THE FOLLOWING:

- Application is approved
- Application is approved with conditions (see comments)
- Application is incomplete and being returned (see comments)
- Application is denied (see comments)

COMMENTS:

WEST PENNSBORO TOWNSHIP

Signature *Jeffrey J. Selig*

Date Approved Nov 20, 2018

Title Road Superintendent

CONTACT WEST PENNSBORO TOWNSHIP ABOUT THIS APPLICATION REQUEST AT  
717-243-8220, MONDAY THRU FRIDAY, 8 AM TO 3 PM.

FEE: \$75.00 paid cash or check# 1344

**HIGHWAY OCCUPANCY PERMIT APPLICATION**

**WEST PENNSBORO TOWNSHIP, CUMBERLAND COUNTY,  
PENNSYLVANIA**

DATE RECEIVED: Nov 12, 2018  
DATE REVIEWED: Nov 20, 2018

APPLICANT: Big Spring School District  
FIRM/COMPANY: Big Spring School District  
ADDRESS: 45 Mount Rock Road, Newville, PA 17241  
EMAIL: RGILLIAM@bigspring.k12.pa.us  
PHONE/FAX NUMBER: (717) 776-2000 Ext. 1601  
PERSON TO CONTACT: Rick Gilliam

\*LOCATION OF H.O.P. REQUEST: Mount Rock Rd. (T-325)  
One (1) School Zone Speed Limit Flasher at STA 56+55.  
See sheet 9 of 16 of the attached plans.

DESCRIPTION OF H.O.P. ACTIVITY: Installation of one (1) Solar Powered  
School Zone Speed Limit Flasher.

WEST PENNSBORO TOWNSHIP HAS REVIEWED THIS HIGHWAY OCCUPANCY PERMIT AND  
HAS DETERMINED THE FOLLOWING:

- Application is approved
- Application is approved with conditions (see comments)
- Application is incomplete and being returned (see comments)
- Application is denied (see comments)

COMMENTS:

WEST PENNSBORO TOWNSHIP

Signature 

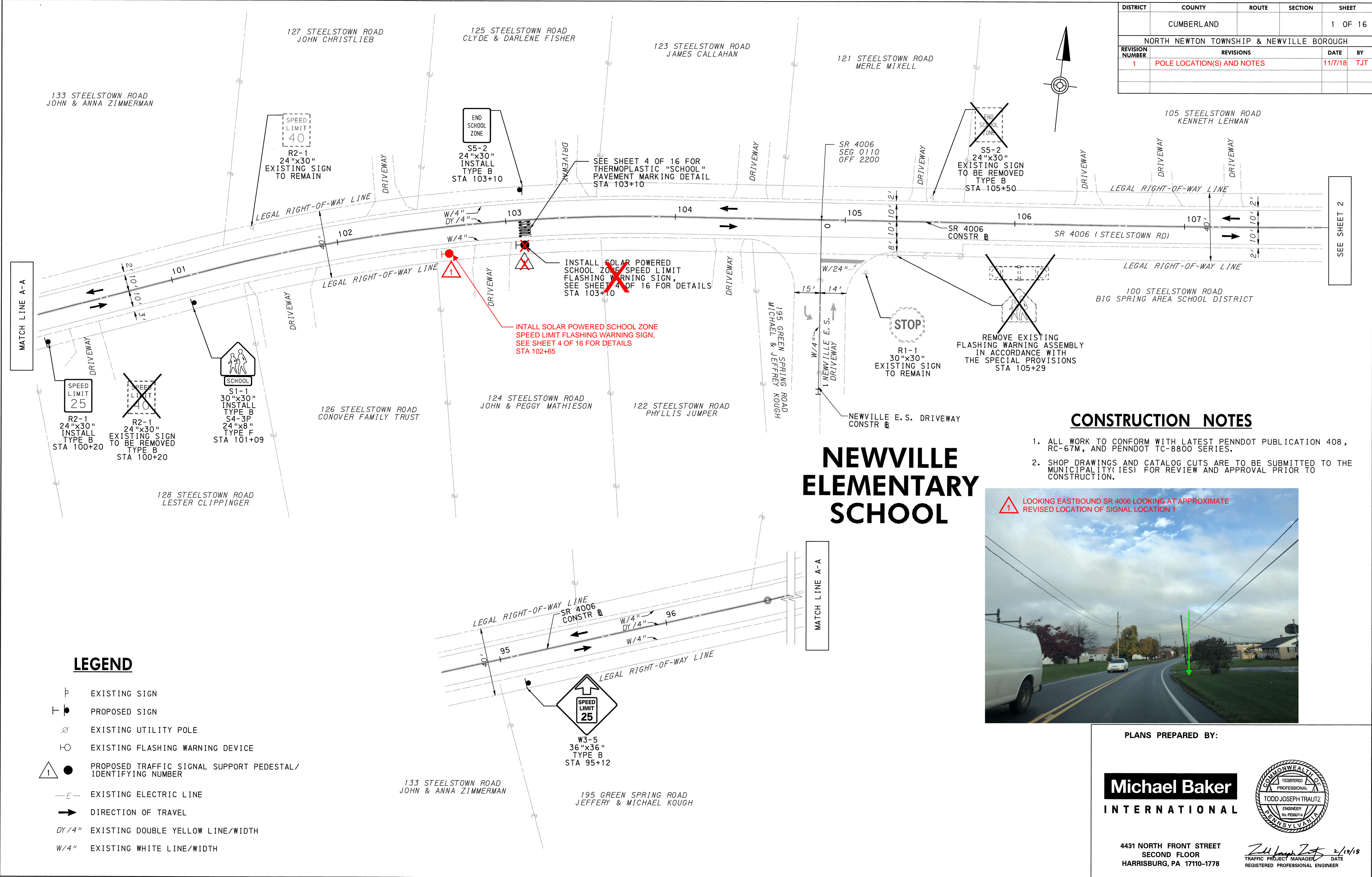
Date Approved NOV 20, 2018

Title Road Superintendent

CONTACT WEST PENNSBORO TOWNSHIP ABOUT THIS APPLICATION REQUEST AT  
717-243-8220, MONDAY THRU FRIDAY, 8 AM TO 3 PM.

FEE: \$75.00 paid cash or check# 1344

DISTRICT	CUMBERLAND	ROUTE	SECTION	SHEET
				1 OF 16
NORTH NEWTON TOWNSHIP & NEWVILLE BOROUGH				
REVISION NUMBER	REVISIONS	DATE	BY	
1	POLE LOCATION(S) AND NOTES	11/7/18	TJT	



# NEWVILLE ELEMENTARY SCHOOL

## CONSTRUCTION NOTES

1. ALL WORK TO CONFORM WITH LATEST PENNDOT PUBLICATION 408, RC-67M, AND PENNDOT TC-8800 SERIES.
2. SHOP DRAWINGS AND CATALOG CUTS ARE TO BE SUBMITTED TO THE MUNICIPALITY(IES) FOR REVIEW AND APPROVAL PRIOR TO CONSTRUCTION.



### LEGEND

- Ⓟ EXISTING SIGN
- Ⓢ PROPOSED SIGN
- ⊗ EXISTING UTILITY POLE
- Ⓛ EXISTING FLASHING WARNING DEVICE
- Ⓛ ● PROPOSED TRAFFIC SIGNAL SUPPORT PEDESTAL/ IDENTIFYING NUMBER
- E— EXISTING ELECTRIC LINE
- ➔ DIRECTION OF TRAVEL
- DY/4" EXISTING DOUBLE YELLOW LINE/WIDTH
- W/4" EXISTING WHITE LINE/WIDTH

PLANS PREPARED BY:

**Michael Baker**

**INTERNATIONAL**

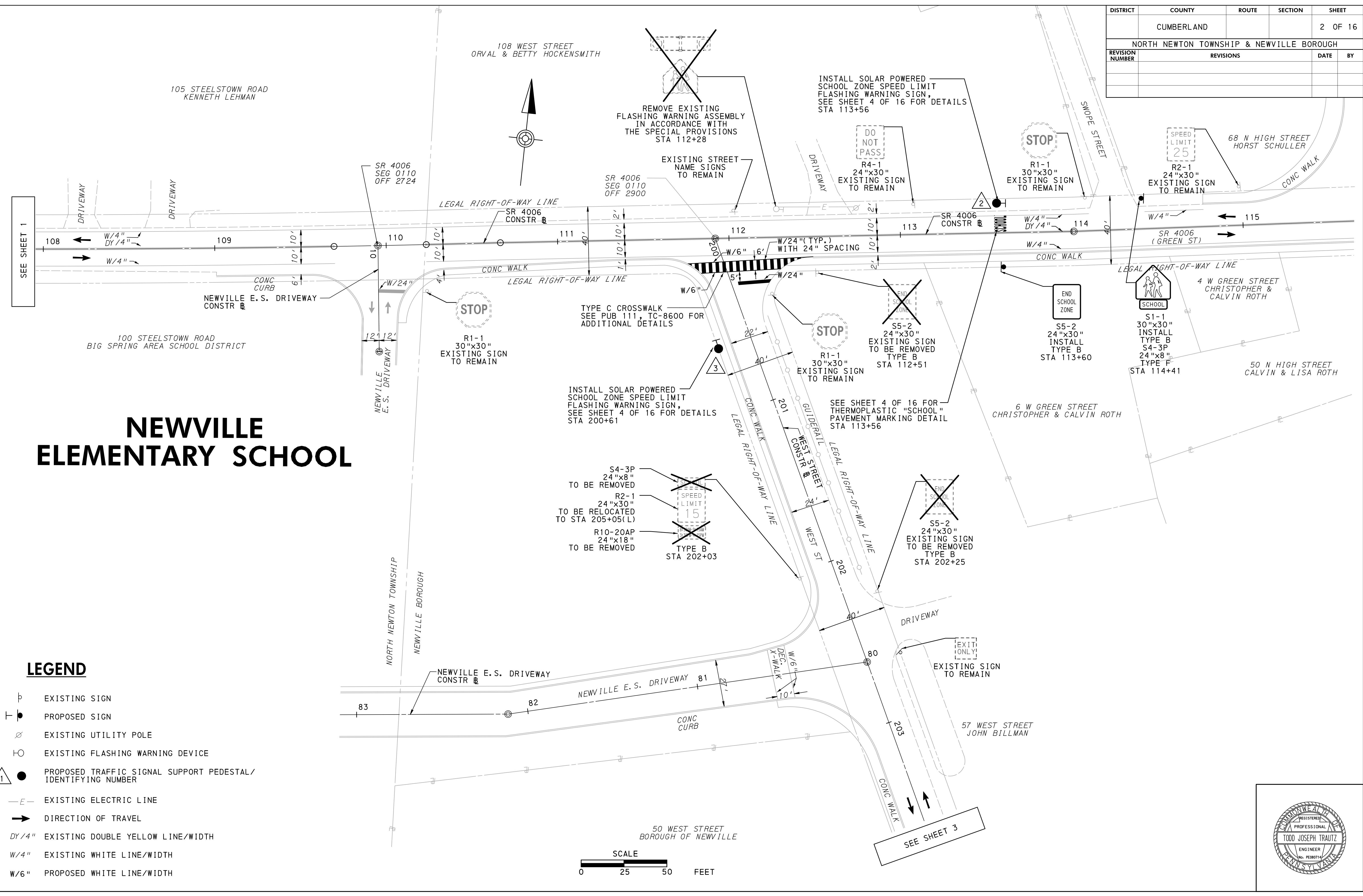
4431 NORTH FRONT STREET  
SECOND FLOOR  
HARRISBURG, PA 17110-1778

*Todd Joseph Trautz* 2/19/18  
TRAFFIC PROJECT MANAGER DATE  
REGISTERED PROFESSIONAL ENGINEER

A:\Drawings\ATW\EB\BTA\_Corridor\Steelstown\Traffic\Signal\Construction\Plan\SR 4006 Steelstown Rd Traffic Signal Construction Plan.dwg 11/7/18 14:29

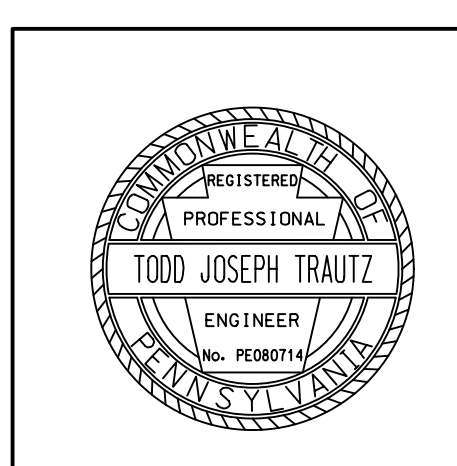
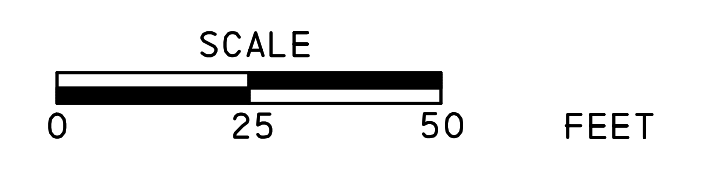
DISTRICT	COUNTY	ROUTE	SECTION	SHEET
	CUMBERLAND			2 OF 16
NORTH NEWTON TOWNSHIP & NEWVILLE BOROUGH				
REVISION NUMBER	REVISIONS	DATE	BY	

# NEWVILLE ELEMENTARY SCHOOL

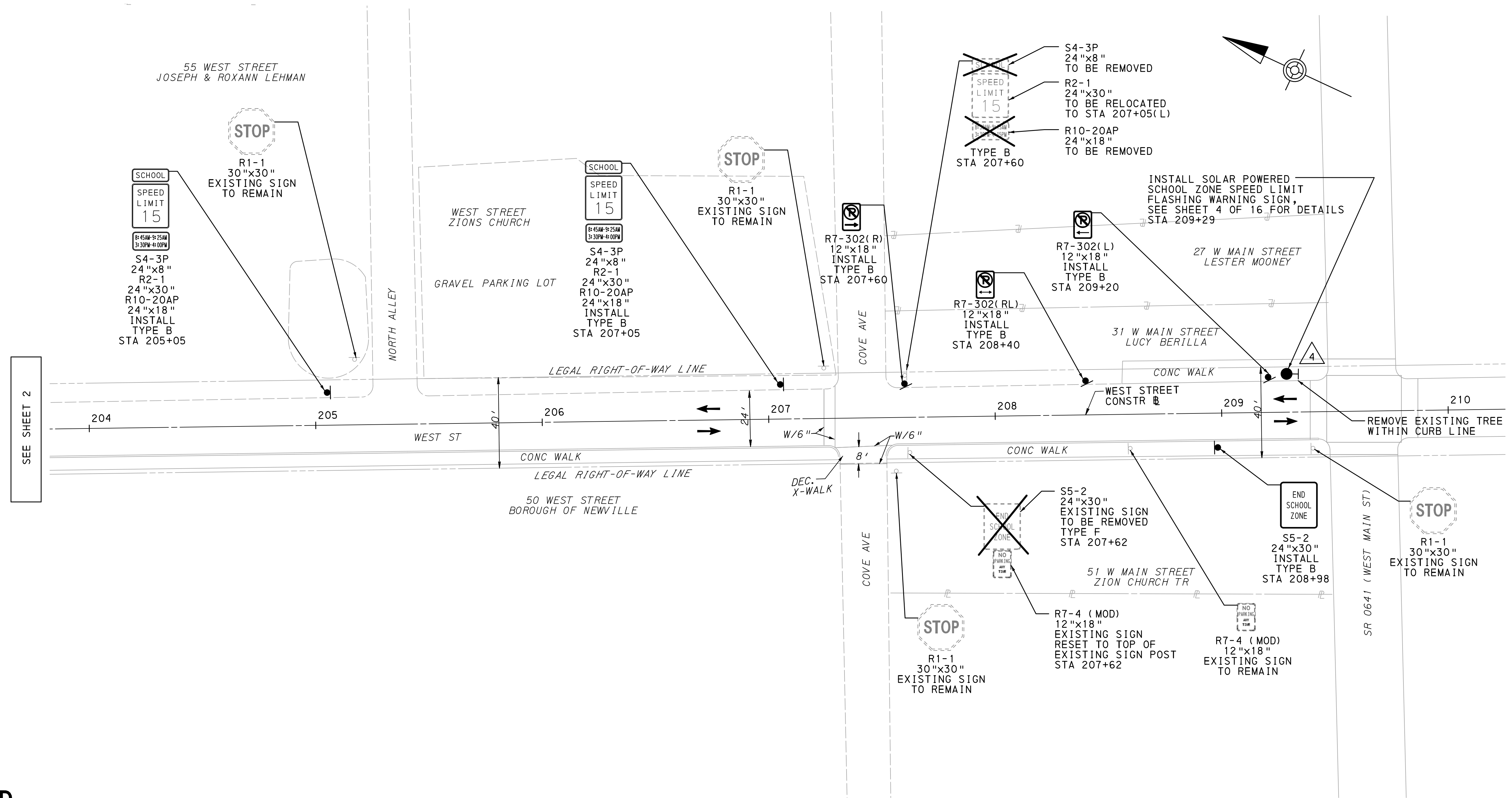


### LEGEND

	EXISTING SIGN
	PROPOSED SIGN
	EXISTING UTILITY POLE
	EXISTING FLASHING WARNING DEVICE
	PROPOSED TRAFFIC SIGNAL SUPPORT PEDESTAL/ IDENTIFYING NUMBER
	EXISTING ELECTRIC LINE
	DIRECTION OF TRAVEL
	EXISTING DOUBLE YELLOW LINE/WIDTH
	EXISTING WHITE LINE/WIDTH
	PROPOSED WHITE LINE/WIDTH

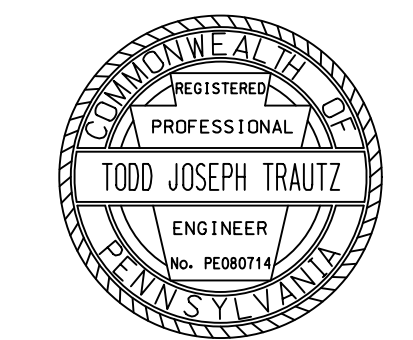
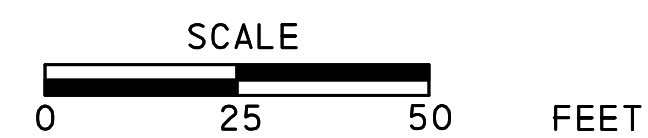


DISTRICT	COUNTY	ROUTE	SECTION	SHEET
	CUMBERLAND			3 OF 16
NORTH NEWTON TOWNSHIP & NEWVILLE BOROUGH				
REVISION NUMBER	REVISIONS	DATE	BY	



**LEGEND**

- EXISTING SIGN
- PROPOSED SIGN
- PROPOSED TRAFFIC SIGNAL SUPPORT PEDESTAL/ IDENTIFYING NUMBER
- DIRECTION OF TRAVEL
- 



G:\Projects\01HER\B1g\_Spring\_School\_District\200\_Deliverables\Traffic\Traffic\_Signals\_Construction\_Plan\01\_03\_Newville\_Elementary.dgn  
 19-FEB-2018 14:20

DISTRICT	COUNTY	ROUTE	SECTION	SHEET
	CUMBERLAND			4 OF 16
NORTH NEWTON TOWNSHIP & NEWVILLE BOROUGH				
REVISION NUMBER	REVISIONS	DATE	BY	
1	POLE LOCATION(S) AND NOTES	11/7/18	TJT	

### TRAFFIC SIGNAL SUPPORTS

STRUCTURE NO.	ITEM NO.	DESCRIPTION	QUANTITY	ROUTE	STATION	SIDE	OFFSET	MAST ARM															PEDESTAL					
								ARM "A"								ARM "B"							ARM "C"			SHAFT	SIGNALS	
								H	K	SIGNAL LOCATION				W	L	SIGNAL LOCATION				Y	L	X	Z	H	M		N	
		M	N	O	P	R	S	T			M	N	O	P	R	S	T											
1	0951 4014 EACH	TRAFFIC SIGNAL SUPPORT, 14' PEDESTAL	1	SR 4006	102+65 <del>103+10</del>	RT	*																		14' <del>16'</del>	*	N/A	
2	0951 4014 EACH	TRAFFIC SIGNAL SUPPORT, 14' PEDESTAL	1	SR 4006	113+56	LT	*																		14' <del>16'</del>	*	N/A	
3	9000 0003 EACH	TRAFFIC SIGNAL SUPPORT, 16' PEDESTAL	1	WEST ST	200+61	RT	*																		16'	*	N/A	
4	9000 0003 EACH	TRAFFIC SIGNAL SUPPORT, 16' PEDESTAL	1	WEST ST	209+28 <del>29</del>	LT	**																		16'	*	N/A	

- \* - SEE SCHOOL ZONE SPEED LIMIT FLASHING WARNING SIGN DETAIL
- \*\* - OFFSET THE CENTER OF SIGNAL POLE 1'-6" FROM THE FACE OF CURB
- ◆ - SEE SPECIAL PROVISIONS

### SIGNS

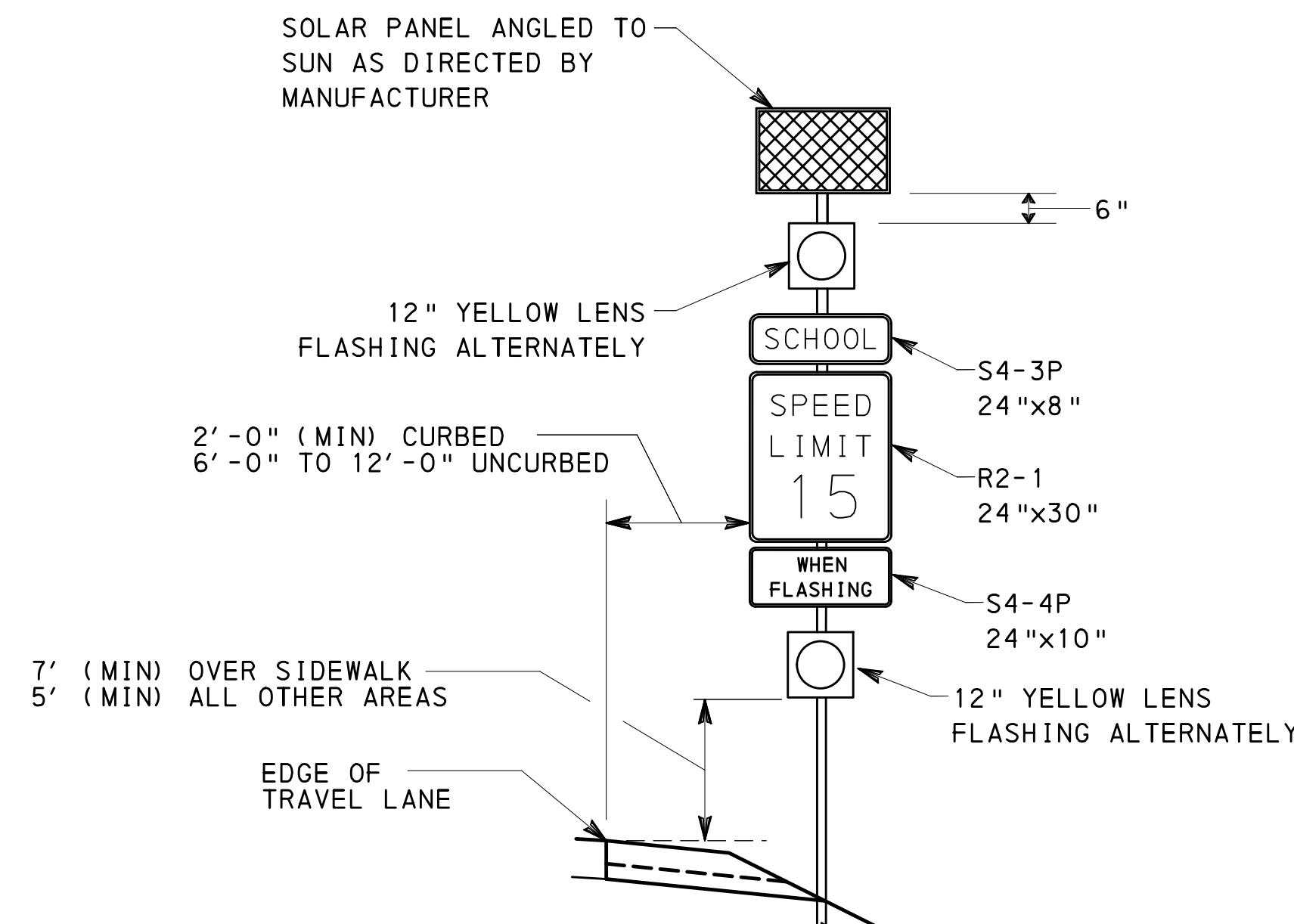
DESCRIPTION	SIZE W x H	SERIES DESIGNATION	SQ FOOT EACH	TYPE B 0931-0001		TYPE F 0935-0001		STRUC MTD 0936-0200		TYPE B REMOVAL 0971-0001		TYPE F REMOVAL 0975-0001	
				QUAN	TOTAL SF	QUAN	TOTAL SF	QUAN	TOTAL SF	QUANTITY	QUANTITY		
SPEED LIMIT (15 MPH)	24"x30"	R2-1	5.0	2	10.0								
SPEED LIMIT (25 MPH)	24"x30"	R2-1	5.0	1	5.0								
SPEED LIMIT (40 MPH)	24"x30"	R2-1	5.0									1	
SCHOOL	30"x30"	S1-1	6.3	3	18.9								
NO PARKING SYMBOL/ARROW (LEFT)	12"x18"	R7-302(L)	1.5	1	1.5								
NO PARKING SYMBOL/ARROW (LEFT AND RIGHT)	12"x18"	R7-302(LR)	1.5	1	1.5								
NO PARKING SYMBOL/ARROW (RIGHT)	12"x18"	R7-302(R)	1.5	1	1.5								
RESTRICTED HOURS PLAQUE *	24"x18"	R10-20AP	3.0			2	6.0						2
SCHOOL (PANEL)	24"x8"	S4-3P	1.3			5	6.5	4	5.2				2
WHEN FLASHING	24"x10"	S4-4P	1.7					4	6.8				
END SCHOOL ZONE	24"x30"	S5-2	5.0	3	15.0							3	1
SPEED REDUCTION SIGN (25 MPH)	36"x36"	W3-5	9.0	1	9.0								
<b>TOTAL</b>				<b>62.4</b>		<b>12.5</b>		<b>32.0</b>		<b>6</b>		<b>5</b>	

- \* - RESTRICTED HOURS PLAQUE TO READ AS FOLLOWS:  
8:45AM-9:25AM  
3:30PM-4:00PM

### MISCELLANEOUS

ITEM NO.	DESCRIPTION	QUANTITY	LOCATION	REMARKS
0936 0410 EACH	SCHOOL ZONE SPEED LIMIT FLASHING WARNING SIGN (TYPE I)	4	1 2 3 4	SEE ITEM NO. 9000-0009 FOR FWS NETWORK CONTROL SYSTEM.
9000 0001 EACH	REMOVAL OF EXISTING FLASHING WARNING ASSEMBLY	2		SEE PLAN SHEETS FOR EXISTING FWD LOCATIONS.

- ◆ - SEE SPECIAL PROVISIONS



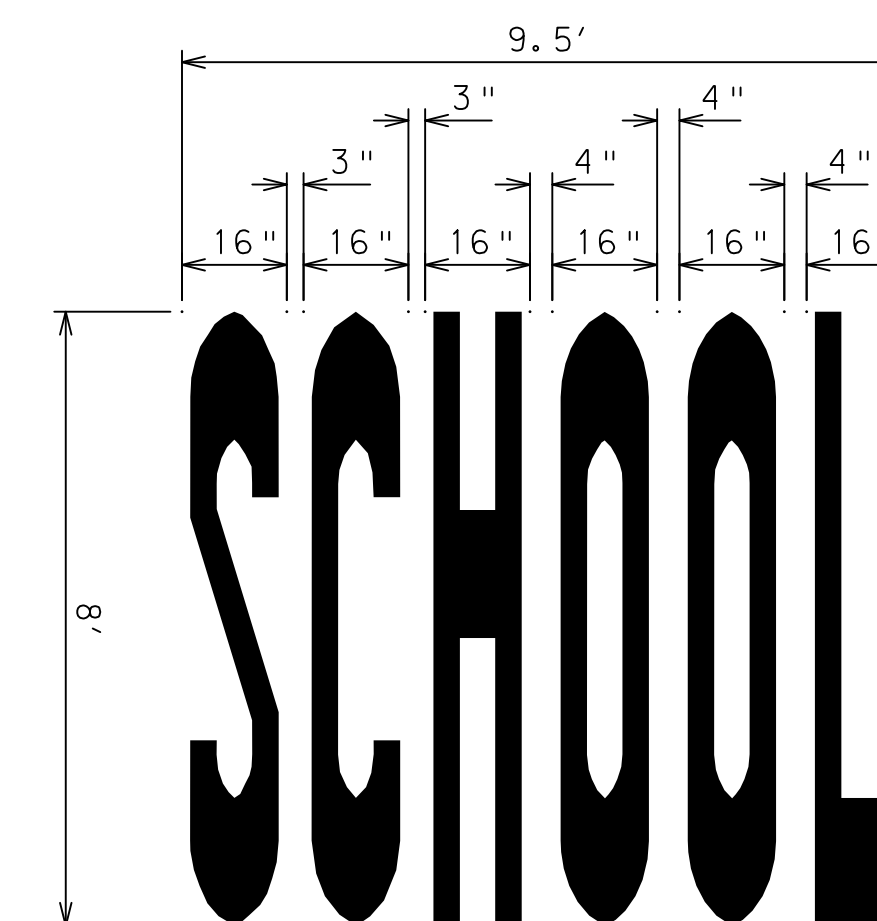
### ITEM NO. 0936-0410

### SCHOOL ZONE SPEED LIMIT FLASHING WARNING SIGN DETAIL

N. T. S.  
SEE OPERATION NOTES FOR FLASH INFORMATION

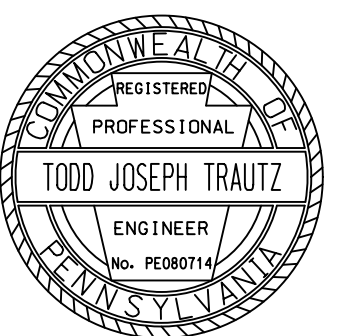
### PAVEMENT MARKINGS

ITEM NUMBER	DESCRIPTION	UNIT	TOTAL
0960-0110	WHITE HOT THERMOPLASTIC LEGEND, "SCHOOL", 8'-0"	EACH	2
0960-0005	6" WHITE HOT THERMOPLASTIC MARKINGS	LF	120
0960-0021	24" WHITE HOT THERMOPLASTIC MARKINGS	LF	115
0963-0001	PAVEMENT MARKING REMOVAL	SF	90



### ITEM NO. 0960-0110 THERMOPLASTIC "SCHOOL" PAVEMENT MARKING DETAIL

N. T. S.  
"SCHOOL" PAVEMENT MESSAGE IS TO BE APPLIED USING PREFORMED THERMOPLASTIC AND INSTALLED IN ACCORDANCE WITH PUB 111 DRAWING NO. TC-8600

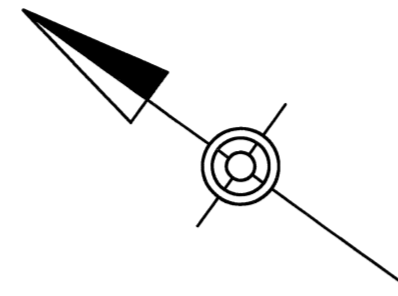


# CONSTRUCTION NOTES

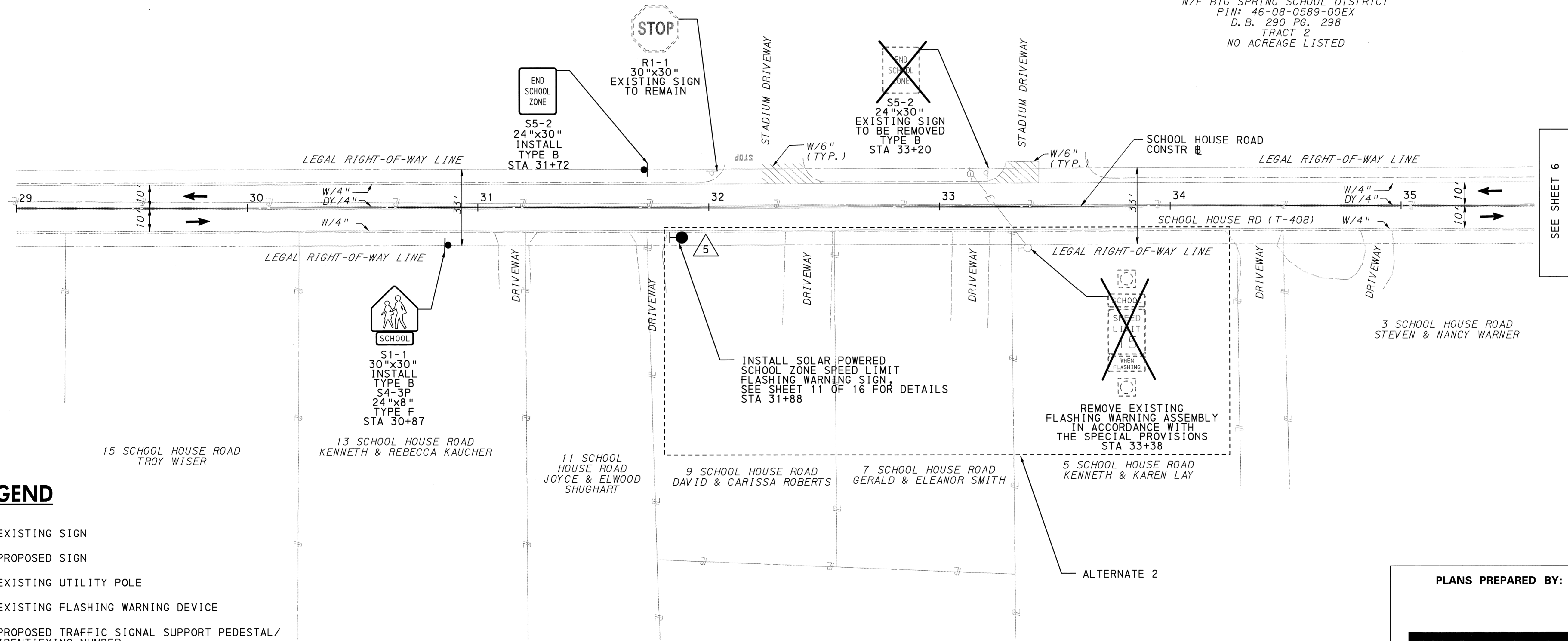
1. ALL WORK TO CONFORM WITH LATEST PENNDOT PUBLICATION 408, RC-67M, AND PENNDOT TC-8800 SERIES.
2. SHOP DRAWINGS AND CATALOG CUTS ARE TO BE SUBMITTED TO THE MUNICIPALITY(IES) FOR REVIEW AND APPROVAL PRIOR TO CONSTRUCTION.
3. SEE CONSTRUCTION PLANS FOR UTILITY LOCATIONS

DISTRICT	COUNTY	ROUTE	SECTION	SHEET
	CUMBERLAND			5 OF 16
WEST PENNSBORO TOWNSHIP				
REVISION NUMBER	REVISIONS	DATE	BY	

# BIG SPRING MIDDLE SCHOOL



45 MOUNT ROCK ROAD  
 BIG SPRING SCHOOL DISTRICT  
 N/F BIG SPRING SCHOOL DISTRICT  
 PIN# 46-08-0589-00EX  
 D. B. 290 PG. 298  
 TRACT 2  
 NO ACREAGE LISTED

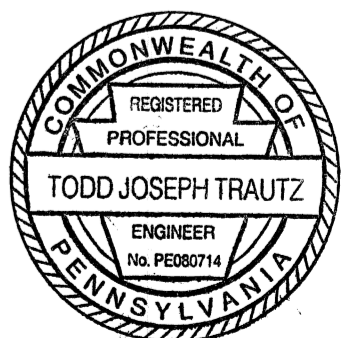


## LEGEND

- ⊥ EXISTING SIGN
- ⊥• PROPOSED SIGN
- ⊕ EXISTING UTILITY POLE
- ⊕ EXISTING FLASHING WARNING DEVICE
- ⊕ 1 PROPOSED TRAFFIC SIGNAL SUPPORT PEDESTAL/ IDENTIFYING NUMBER
- E— EXISTING ELECTRIC LINE
- ➔ DIRECTION OF TRAVEL
- DY/4" EXISTING DOUBLE YELLOW LINE/WIDTH
- W/4" EXISTING WHITE LINE/WIDTH

PLANS PREPARED BY:

**Michael Baker**  
 INTERNATIONAL



4431 NORTH FRONT STREET  
 SECOND FLOOR  
 HARRISBURG, PA 17110-1778

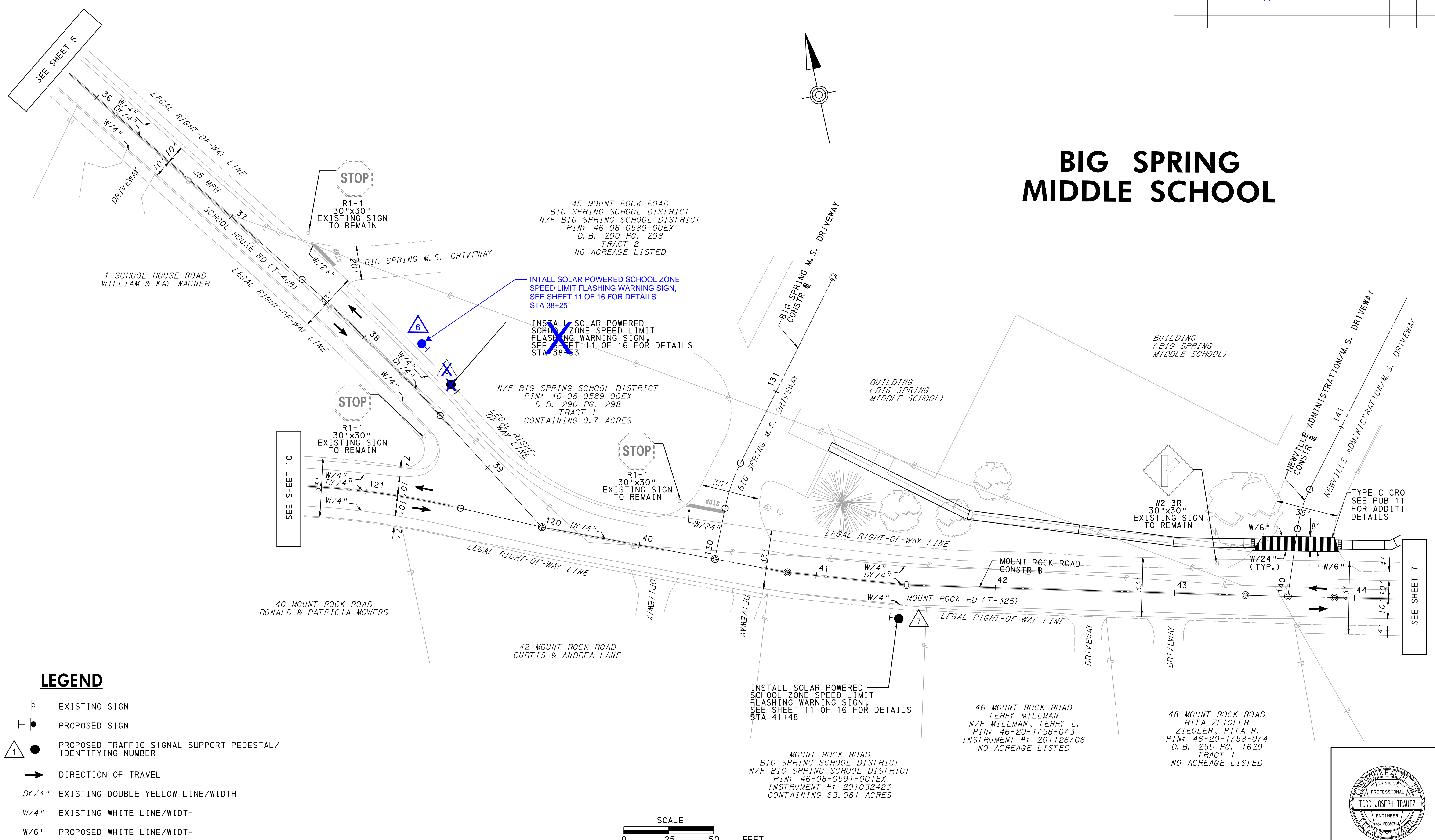
*Trautz* 2/19/18  
 TRAFFIC PROJECT MANAGER DATE  
 REGISTERED PROFESSIONAL ENGINEER

SEE SHEET 6

10-LEB-2018 14-20

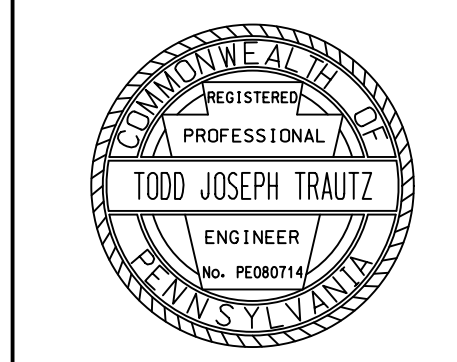
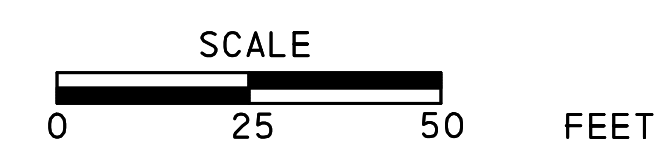
DISTRICT	COUNTY	ROUTE	SECTION	SHEET	
	CUMBERLAND			6 OF 16	
WEST PENNSBORO TOWNSHIP					
REVISION NUMBER	REVISIONS			DATE	BY
2	POLE LOCATION(S) AND NOTES			11/12/18	TJT

# BIG SPRING MIDDLE SCHOOL



## LEGEND

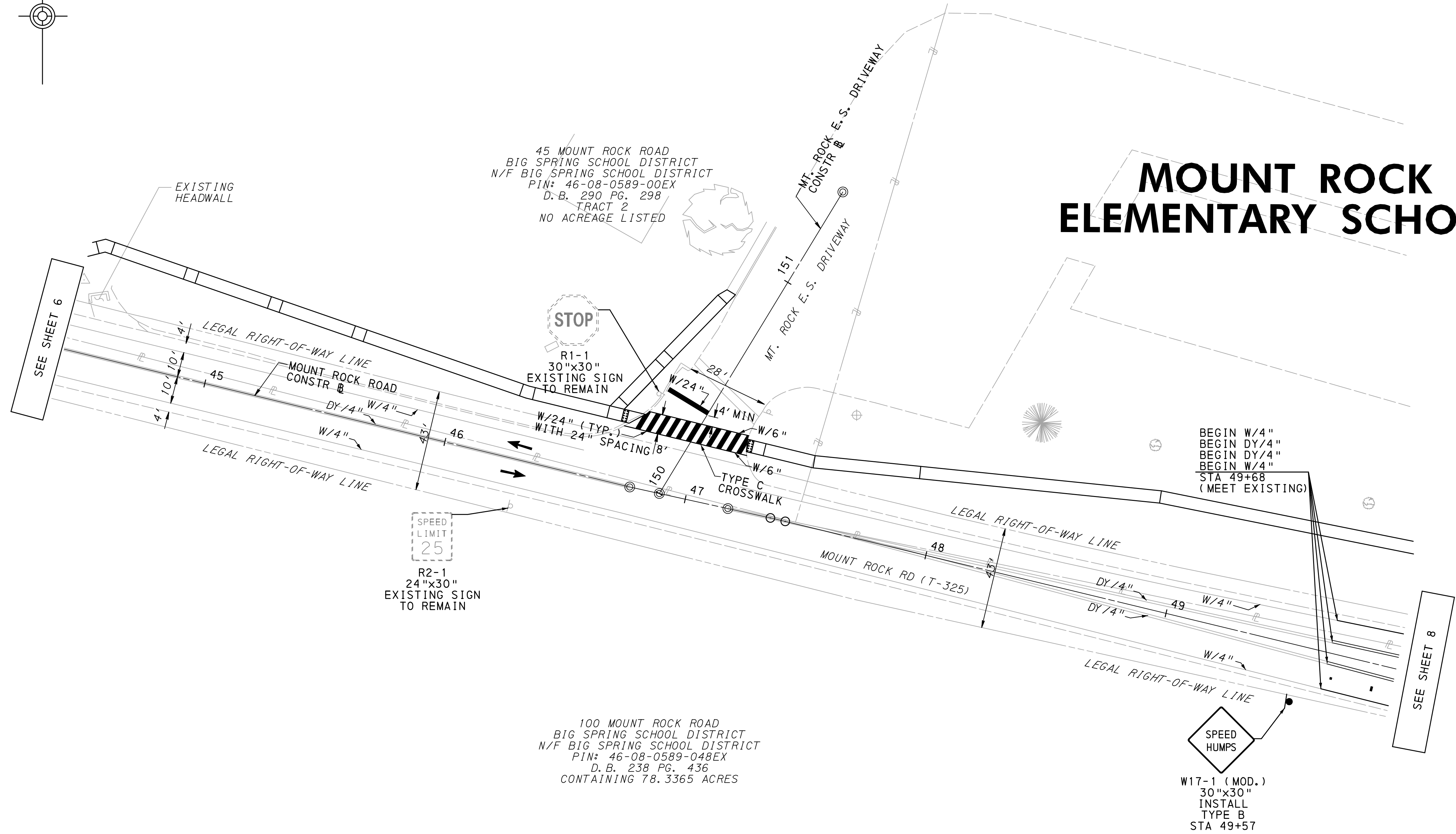
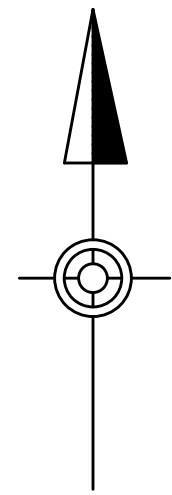
- EXISTING SIGN
- PROPOSED SIGN
- PROPOSED TRAFFIC SIGNAL SUPPORT PEDESTAL / IDENTIFYING NUMBER
- DIRECTION OF TRAVEL
- EXISTING DOUBLE YELLOW LINE/WIDTH
- EXISTING WHITE LINE/WIDTH
- PROPOSED WHITE LINE/WIDTH



19-FEB-2018 14:20 g:\Projects\01HER\Big Spring School District\0200 Deliverables\Traffic\Traffic Signal Construction Plan\02\_06\_Big Spring HS.dgn

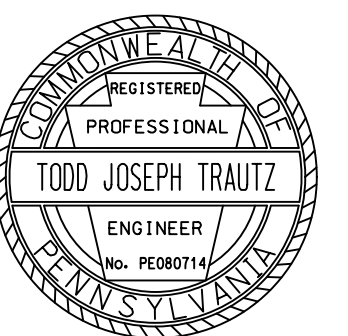
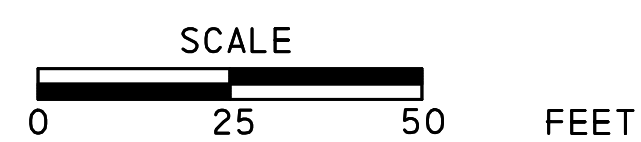


DISTRICT	COUNTY	ROUTE	SECTION	SHEET
	CUMBERLAND			7 OF 16
WEST PENNSBORO TOWNSHIP				
REVISION NUMBER	REVISIONS	DATE	BY	



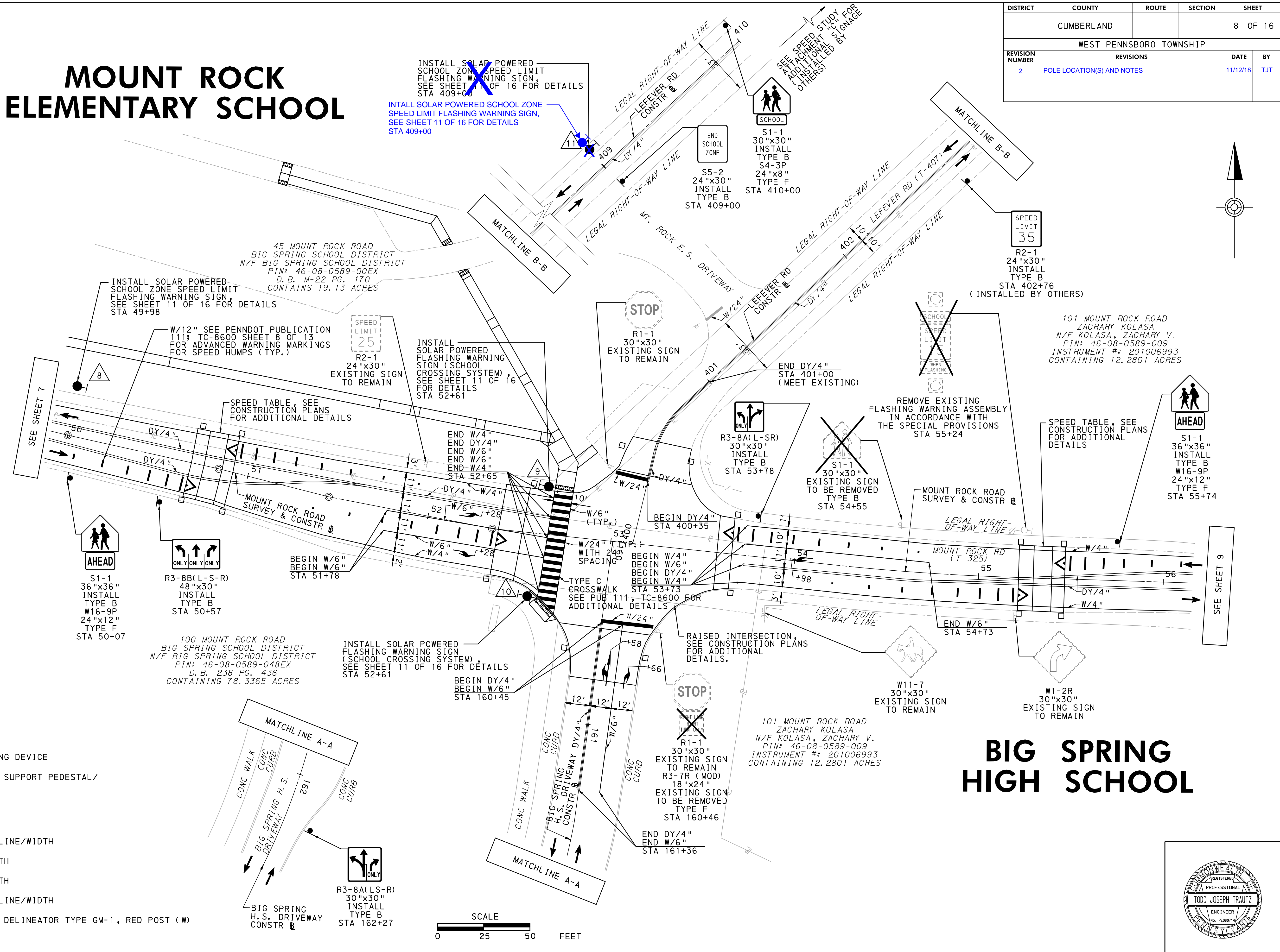
**LEGEND**

- ⊖ EXISTING SIGN
- ⊕ PROPOSED SIGN
- ➔ DIRECTION OF TRAVEL
- DY/4" EXISTING DOUBLE YELLOW LINE/WIDTH
- W/4" EXISTING WHITE LINE/WIDTH
- W/4" PROPOSED WHITE LINE/WIDTH
- DY/4" PROPOSED DOUBLE YELLOW LINE/WIDTH



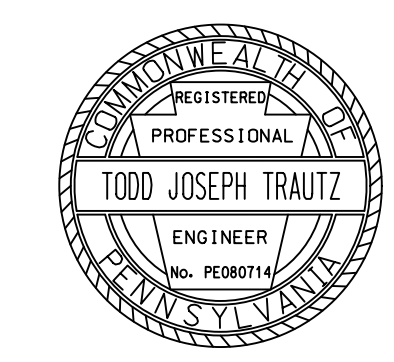
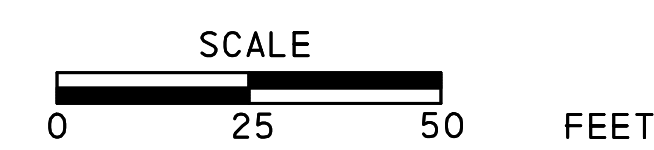
# MOUNT ROCK ELEMENTARY SCHOOL

DISTRICT	COUNTY	ROUTE	SECTION	SHEET	
	CUMBERLAND			8 OF 16	
WEST PENNSBORO TOWNSHIP					
REVISION NUMBER	REVISIONS			DATE	BY
2	POLE LOCATION(S) AND NOTES			11/12/18	TJT



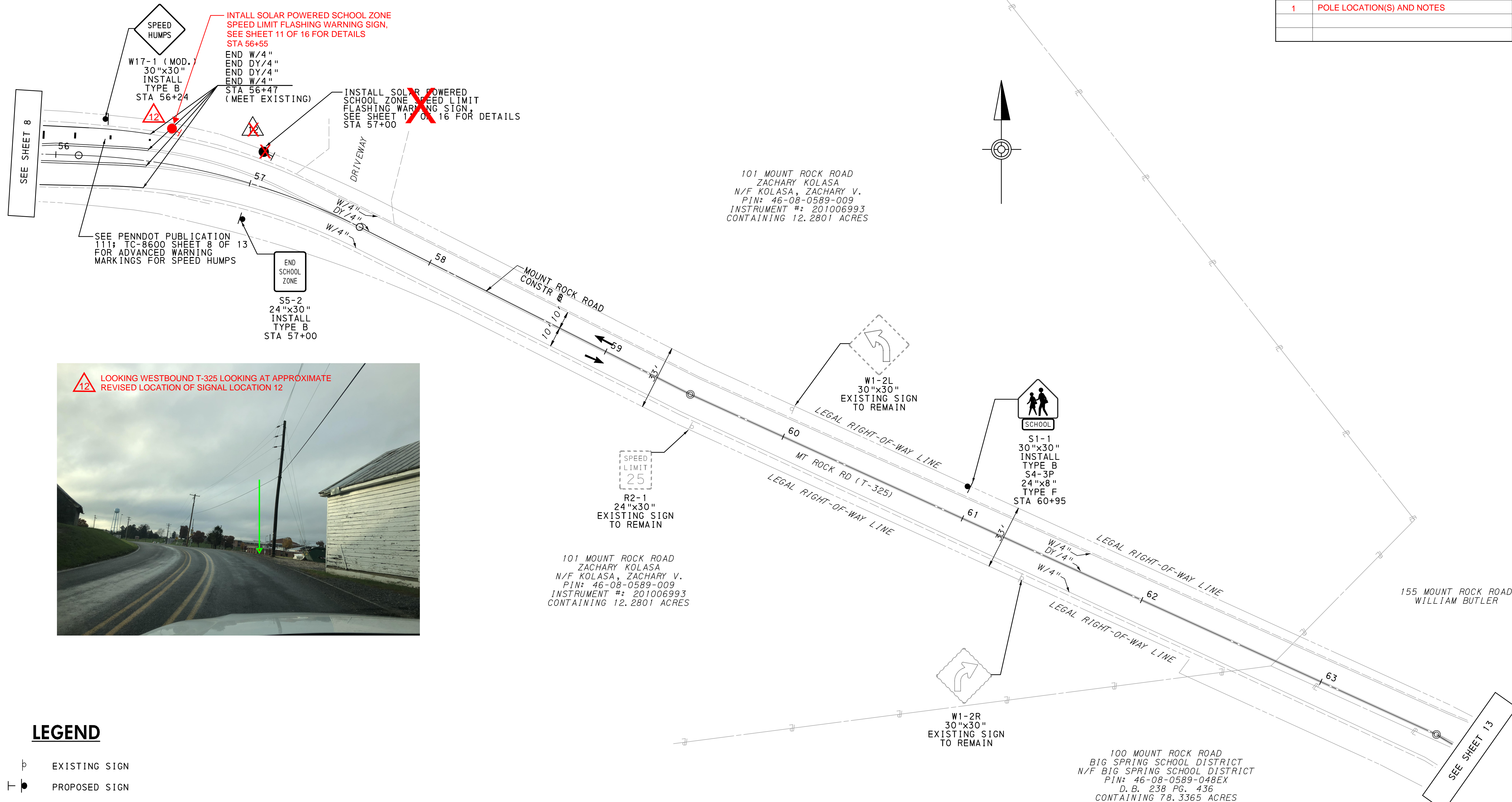
## LEGEND

- EXISTING SIGN
- PROPOSED SIGN
- EXISTING UTILITY POLE
- EXISTING FLASHING WARNING DEVICE
- PROPOSED TRAFFIC SIGNAL SUPPORT PEDESTAL/  
IDENTIFYING NUMBER
- EXISTING ELECTRIC LINE
- DIRECTION OF TRAVEL
- EXISTING DOUBLE YELLOW LINE/WIDTH
- EXISTING WHITE LINE/WIDTH
- EXISTING WHITE LINE/WIDTH
- PROPOSED DOUBLE YELLOW LINE/WIDTH
- PROPOSED GROUND MOUNTED DELINEATOR TYPE GM-1, RED POST (W)



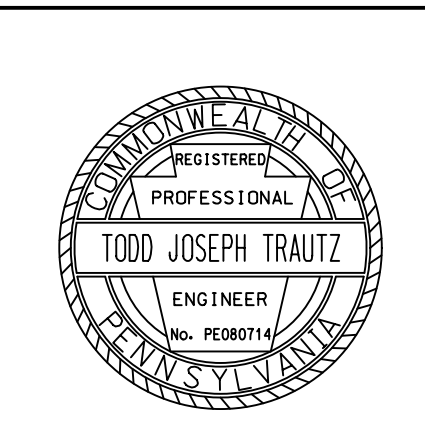
19-FEB-2018 14:21 g:\Projects\01HER\Big Spring School - District\Traffic\Signal Construction\Plan\02-08-Big Spring HS.dgn

DISTRICT	COUNTY	ROUTE	SECTION	SHEET
	CUMBERLAND			9 OF 16
WEST PENNSBORO TOWNSHIP				
REVISION NUMBER	REVISIONS	DATE	BY	
1	POLE LOCATION(S) AND NOTES	11/7/18	TJT	



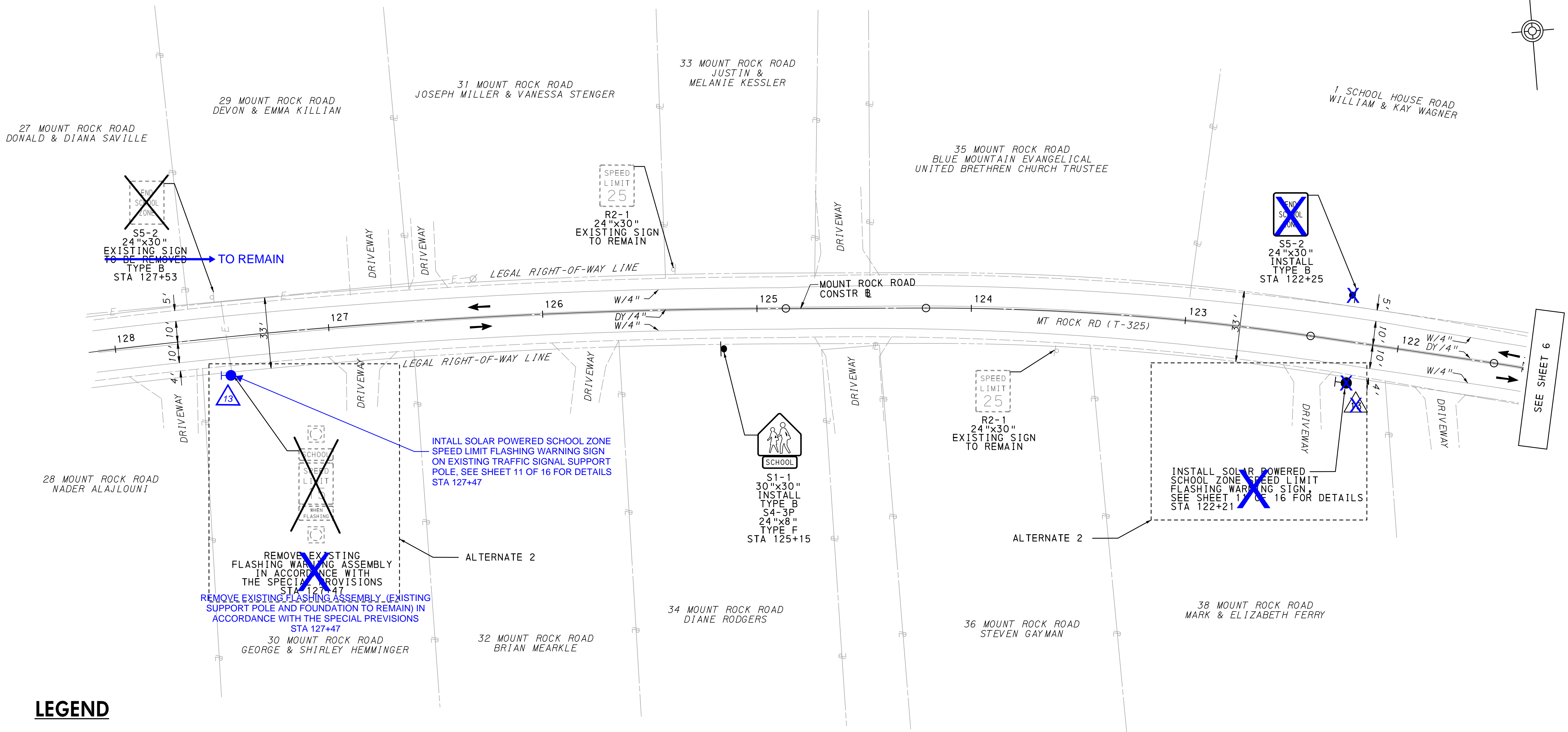
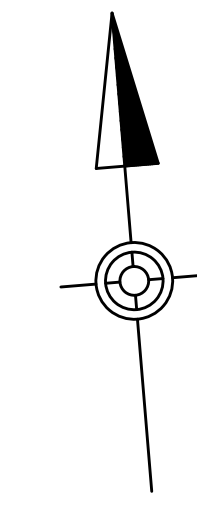
**LEGEND**

- ⊥ EXISTING SIGN
- ⊥• PROPOSED SIGN
- △● PROPOSED TRAFFIC SIGNAL SUPPORT PEDESTAL/ IDENTIFYING NUMBER
- DIRECTION OF TRAVEL
- DY/4" EXISTING DOUBLE YELLOW LINE/WIDTH
- W/4" EXISTING WHITE LINE/WIDTH
- W/4" PROPOSED WHITE LINE/WIDTH
- DY/4" PROPOSED DOUBLE YELLOW LINE/WIDTH



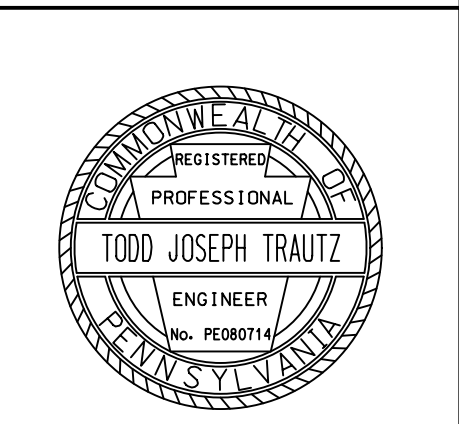
g:\Projects\01HER\Big Spring School District\Traffic\Traffic Signal Construction Plan\02\_09\_Big Spring HS.dgn 19-FEB-2018 14:21

DISTRICT	COUNTY	ROUTE	SECTION	SHEET	
	CUMBERLAND			10 OF 16	
WEST PENNSBORO TOWNSHIP					
REVISION NUMBER	REVISIONS			DATE	BY
2	POLE LOCATION(S) AND NOTES			11/12/18	TJT



**LEGEND**

- EXISTING SIGN
- PROPOSED SIGN
- PROPOSED TRAFFIC SIGNAL SUPPORT PEDESTAL/  
IDENTIFYING NUMBER
- DIRECTION OF TRAVEL
- DY/4" EXISTING DOUBLE YELLOW LINE/WIDTH
- W/4" EXISTING WHITE LINE/WIDTH



G:\Projects\01HER\Big Spring School District\200 Deliverables\Traffic\Traffic Signal Construction Plan\02\_10.Big Spring HS.dgn  
 19-FEB-2018 14:21

## TRAFFIC SIGNAL SUPPORTS

STRUCTURE NO.	ITEM NO.	DESCRIPTION	QUANTITY	ROUTE	STATION	SIDE	OFFSET	PEDESTAL			REMARKS
								SHAFT		SIGNALS	
								H	M		
5	0951 4014 EACH	TRAFFIC SIGNAL SUPPORT, 14' PEDESTAL	1	SCHOOL HOUSE RD	31+88	RT	*	14'	*	N/A	ALTERNATE 2
6	0951 4014 EACH	TRAFFIC SIGNAL SUPPORT, 14' PEDESTAL	1	SCHOOL HOUSE RD	<del>38+25</del> <del>38+53</del>	LT	*	14'	*	N/A	
7	0951 4014 EACH	TRAFFIC SIGNAL SUPPORT, 14' PEDESTAL	1	MT ROCK RD	41+48	RT	*	14'	*	N/A	
8	0951 4014 EACH	TRAFFIC SIGNAL SUPPORT, 14' PEDESTAL	1	MT ROCK RD	49+98	LT	*	14'	*	N/A	
9	0951 4014 EACH	TRAFFIC SIGNAL SUPPORT, 14' PEDESTAL	1	MT ROCK RD	52+61	LT	**	14'	**	N/A	
10	0951 4014 EACH	TRAFFIC SIGNAL SUPPORT, 14' PEDESTAL	1	MT ROCK RD	52+61	RT	**	14'	**	N/A	
11	0951 4014 EACH	TRAFFIC SIGNAL SUPPORT, 14' PEDESTAL	1	LEFEVER RD	409+00	LT	*	14'	*	N/A	
12	0951 4014 EACH	TRAFFIC SIGNAL SUPPORT, 14' PEDESTAL	1	MT ROCK RD	<del>56+55</del> <del>57+00</del>	LT	*	14'	*	N/A	
13	0951 4014 EACH	TRAFFIC SIGNAL SUPPORT, 14' PEDESTAL	1	MT ROCK RD	<del>122+21</del>	LT	*	14'	*	N/A	ALTERNATE 2

\* - SEE SCHOOL ZONE SPEED LIMIT FLASHING WARNING SIGN DETAIL  
 \*\* - SEE FLASHING WARNING SIGN (SCHOOL CROSSING SYSTEM) DETAIL

## PAVEMENT MARKINGS & DELINEATION

ITEM NUMBER	DESCRIPTION	UNIT	TOTAL
0901-0320	4" STANDARD PAVEMENT MARKINGS, PAINT & BEADS, YELLOW	LF	2215
0901-0330	4" STANDARD PAVEMENT MARKINGS, PAINT & BEADS, WHITE	LF	1210
0901-0331	6" STANDARD PAVEMENT MARKINGS, PAINT & BEADS, WHITE	LF	375
0937-0323	FLEXIBLE DELINEATOR POST, GROUND MOUNT TYPE GM-1, RED POST WITH WHITE SHEETING	EA	16
0960-0005	6" WHITE HOT THERMOPLASTIC MARKINGS	LF	350
0960-0011	12" WHITE HOT THERMOPLASTIC MARKINGS	LF	216
0960-0021	24" WHITE HOT THERMOPLASTIC MARKINGS	LF	425
0960-0120	WHITE HOT THERMOPLASTIC LEGEND, "SPEED HUMP SYMBOL", 6' - 0" X 6'-0"	EACH	6
0960-0222	WHITE HOT THERMOPLASTIC LEGEND, "RIGHT ARROW", 12' - 0" X 3' - 0"	EACH	2
0960-0224	WHITE HOT THERMOPLASTIC LEGEND, "LEFT ARROW", 12' - 0" X 3' - 0"	EACH	2
0960-0228	WHITE HOT THERMOPLASTIC LEGEND, "THRU AND LEFT ARROW", 20' - 0" X 3' - 7"	EACH	1
0962-1000	4" WHITE WATERBORNE PAVEMENT MARKINGS	LF	1210
0962-1001	6" WHITE WATERBORNE PAVEMENT MARKINGS	LF	375
0962-1005	4" YELLOW WATERBORNE PAVEMENT MARKINGS	SF	2215
0963-0001	PAVEMENT MARKING REMOVAL	SF	2275

9000  
0004  
EACH REMOVE EXISTING FLASHING WARNING ASSEMBLY (EXISTING SUPPORT POLE AND FOUNDATION TO REMAIN) 1 ALTERNATE 2

## MISCELLANEOUS

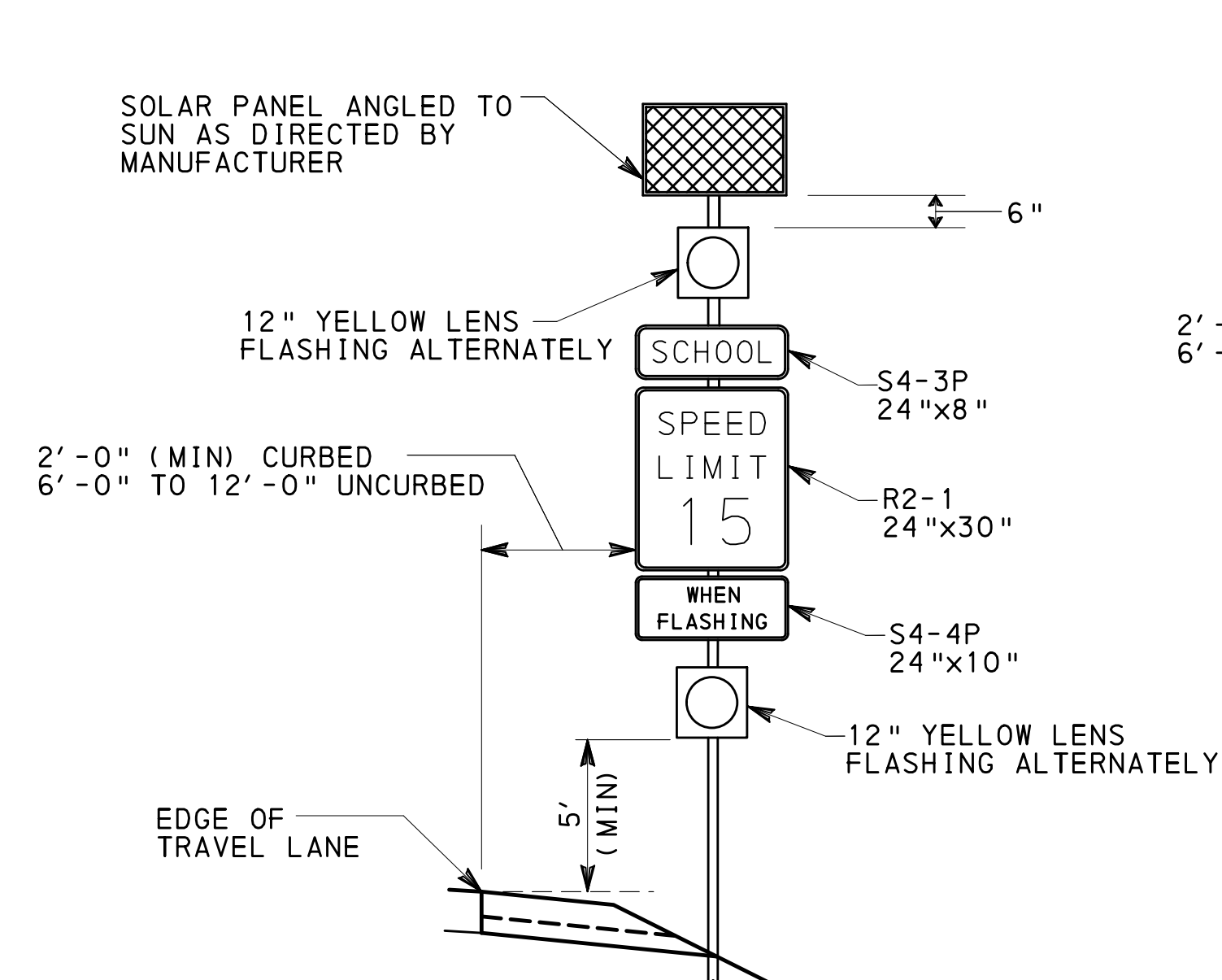
ITEM NO.	DESCRIPTION	QUANTITY	LOCATION	REMARKS
0936 0410 EACH	SCHOOL ZONE SPEED LIMIT FLASHING WARNING SIGN (TYPE I)	5		SEE ITEM NO. 9000-0009 FOR FWS NETWORK CONTROL SYSTEM.
0936 0410 EACH	SCHOOL ZONE SPEED LIMIT FLASHING WARNING SIGN (TYPE I)	2		ALTERNATE 2 - SEE ITEM NO. 9000-0009 FOR FWS NETWORK CONTROL SYSTEM.
9000 0001 EACH	REMOVAL OF EXISTING FLASHING WARNING ASSEMBLY	1		SEE PLAN SHEETS FOR EXISTING FWD LOCATIONS.
9000 0001 EACH	REMOVAL OF EXISTING FLASHING WARNING ASSEMBLY	1		ALTERNATE 2 LOCATED: STA 33+38 <del>STA 127+47</del>
9000 0002 EACH	FLASHING WARNING SIGN (SCHOOL CROSSING SYSTEM)	1		
9000 0009 LS	FLASHING WARNING SIGN NETWORK CONTROL SYSTEM	1		

♦ - SEE SPECIAL PROVISIONS

## SIGNS

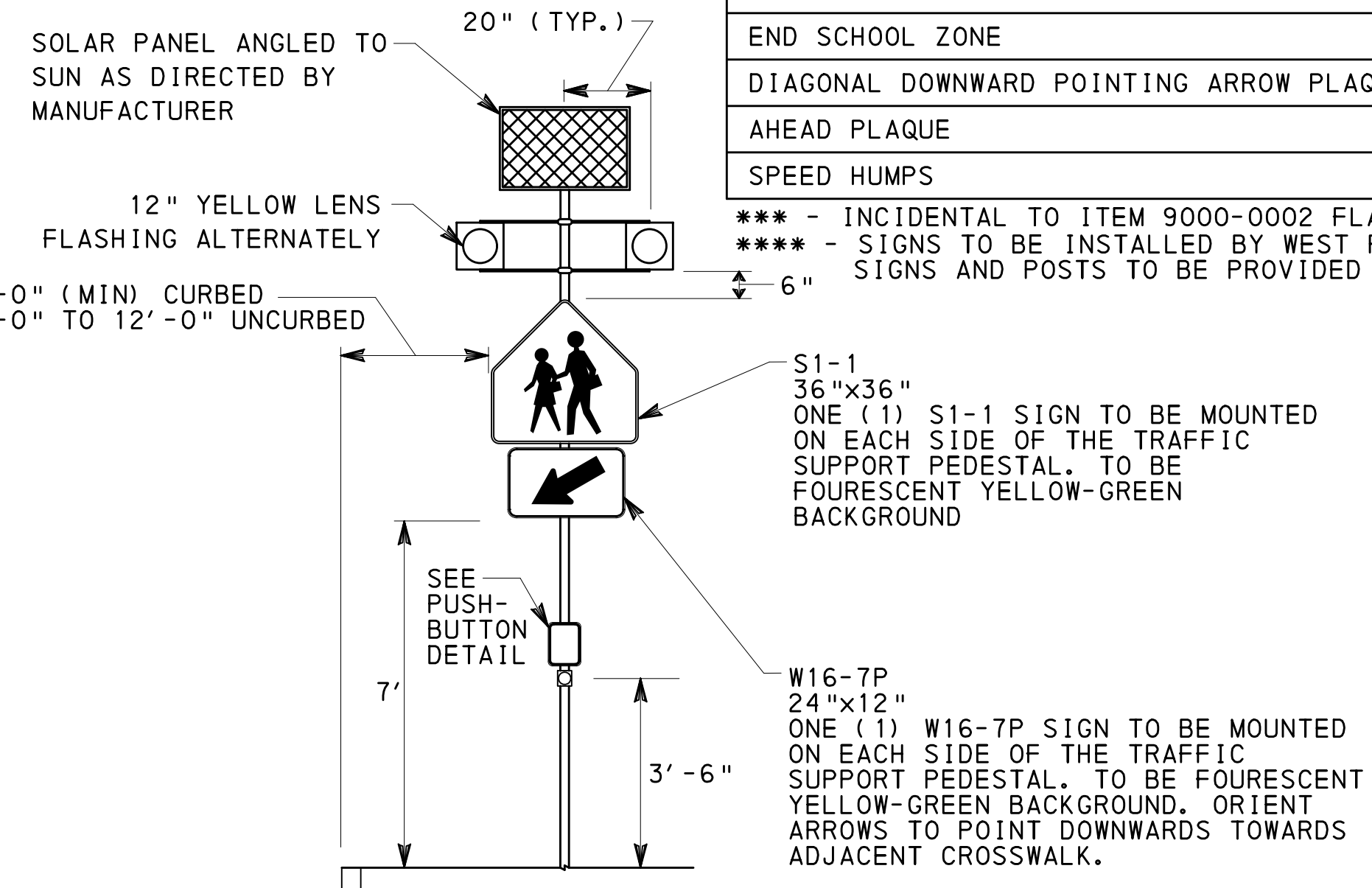
DESCRIPTION	SIZE W x H	SERIES DESIGNATION	SQ FOOT EACH	TYPE B 0931-0001		TYPE F 0935-0001		STRUC MTD 0936-0200		TYPE B REMOVAL 0971-0001		TYPE F REMOVAL 0975-0001	
				QUAN	TOTAL SF	QUAN	TOTAL SF	QUAN	TOTAL SF	QUANTITY	QUANTITY		
STOP	30"x30"	R1-1	6.3	1	6.3								
SPEED LIMIT (15 MPH)	24"x30"	R2-1	5.0					7	35.0				
SPEED LIMIT (35 MPH)****	24"x30"	R2-1	5.0	6	30.0								
RIGHT LANE MUST TURN RIGHT	30"x30"	R3-7R	6.3										1
LANE USE CONTROL (TWO LANES)	30"x30"	R3-8A (LS-R)	6.3	1	6.3								
LANE USE CONTROL (TWO LANES)	30"x30"	R3-8A (L-SR)	6.3	1	6.3								
LANE USE CONTROL (THREE LANES)	48"x30"	R3-8B (L-S-R)	10.0	1	10.0								
PUSH BUTTON TO TURN ON WARNING LIGHTS	9"x12"	R10-12	0.8					2	***				
SCHOOL	36"x36"	S1-1	9.0	2	18.0			4	***				
SCHOOL	30"x30"	S1-1	6.3	4	25.2							1	
SCHOOL (PANEL)	24"x8"	S4-3P	1.3			4	5.2	7	9.1				
WHEN FLASHING	24"x10"	S4-4P	1.7					7	11.9				
END SCHOOL ZONE	24"x30"	S5-2	5.0	3	15.0							2	
DIAGONAL DOWNWARD POINTING ARROW PLAQUE	24"x12"	W16-7P	2.0					4	***				
AHEAD PLAQUE	24"x12"	W16-9P	2.0			2	10.0						
SPEED HUMPS	30"x30"	W17-1 (MOD)	6.3	2	12.6								
<b>TOTAL</b>					134.7		15.2		56.0		5		1

\*\*\*\* - INCIDENTAL TO ITEM 9000-0002 FLASHING WARNING SIGN (SCHOOL CROSSING SYSTEM)  
 \*\*\*\*\* - SIGNS TO BE INSTALLED BY WEST PENNSBORO TOWNSHIP, SIGNS AND POSTS TO BE PROVIDED BY CONTRACTOR.



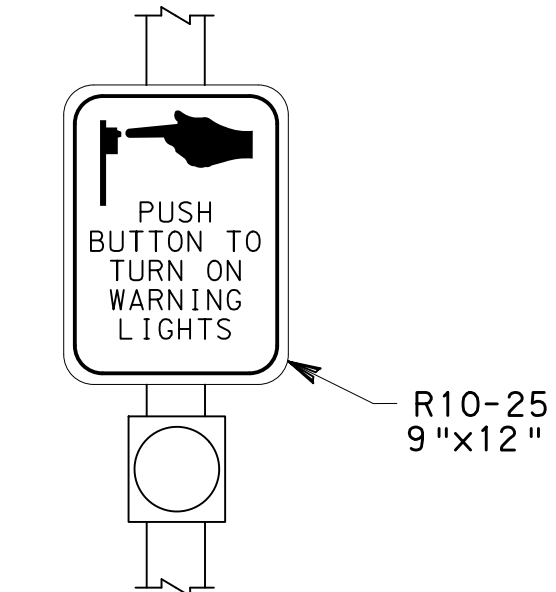
**ITEM NO. 0936-0410**  
**SCHOOL ZONE SPEED LIMIT FLASHING WARNING SIGN DETAIL**

N. T. S.  
 SEE SCHOOL ZONE SPEED LIMIT FLASHING WARNING SIGN OPERATION NOTES ON SHEET 12 OF 16

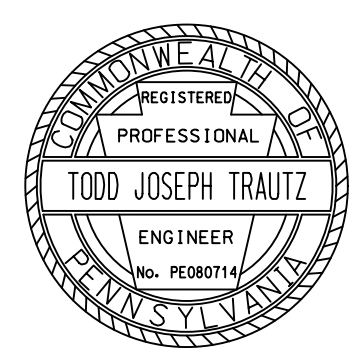


**ITEM NO. 9000-0002**  
**FLASHING WARNING SIGN (SCHOOL CROSSING SYSTEM) DETAIL**

N. T. S.  
 SEE FLASHING WARNING SIGN (SCHOOL CROSSING SYSTEM) OPERATION NOTES ON SHEET 12 OF 16



**PUSHBUTTON DETAIL**  
 N. T. S.



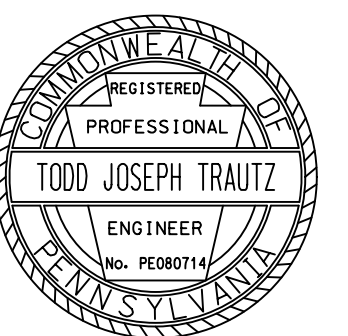
DISTRICT	COUNTY	ROUTE	SECTION	SHEET
	CUMBERLAND			12 OF 16
WEST PENNSBORO TOWNSHIP				
REVISION NUMBER	REVISIONS			DATE BY

**SCHOOL ZONE SPEED LIMIT  
FLASHING WARNING SIGN  
OPERATION NOTES:**

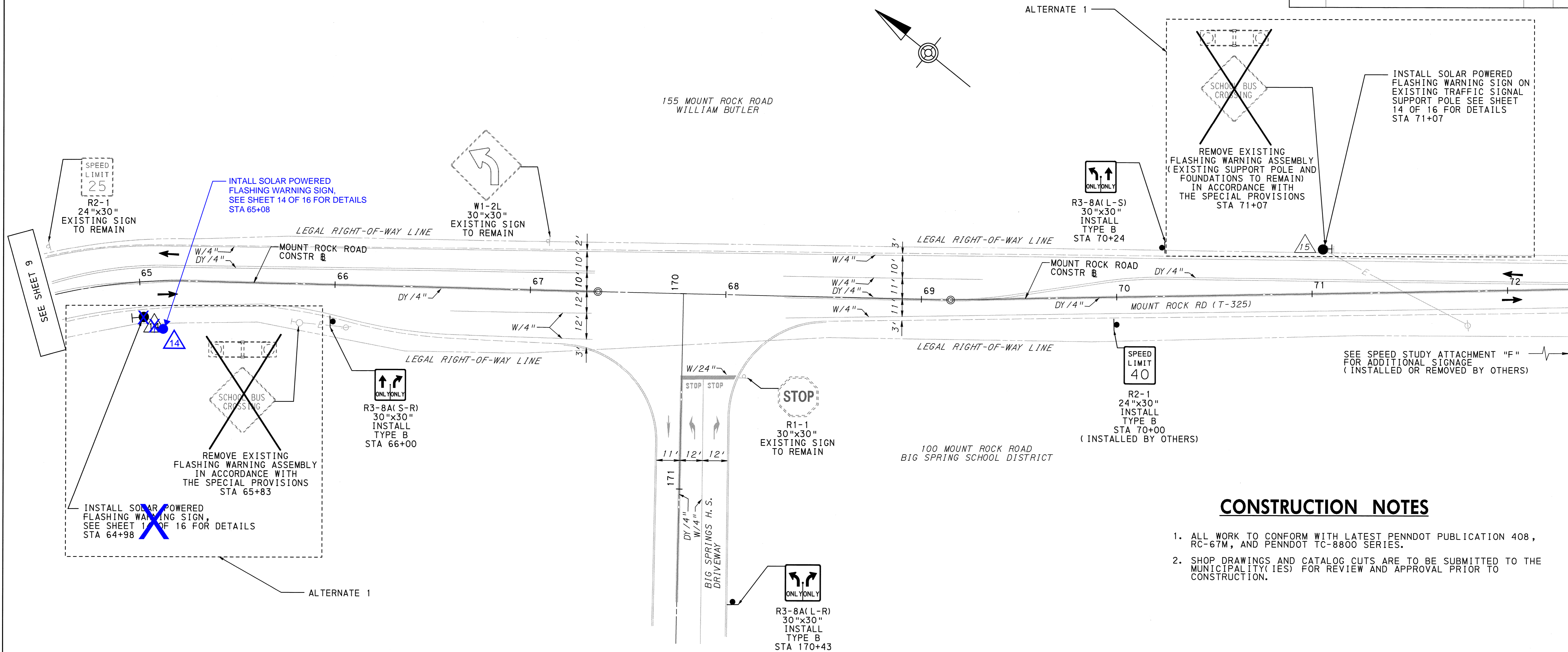
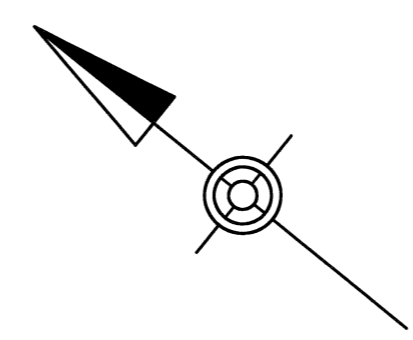
1. BEACONS SHALL BE FLASHED AT A RATE OF NOT LESS THAN 50 OR MORE THAN 60 TIMES PER MINUTE.
2. THE ILLUMINATED PERIOD OF EACH FLASH SHALL BE A MINIMUM OF 1/2 AND A MAXIMUM OF 2/3 OF THE TOTAL CYCLE.
3. FWD SHALL DISPLAY TWO ALTERNATELY FLASHING YELLOW BEACONS DURING PERIODS OF OPERATION AND REMAIN DARK AT ALL OTHER TIMES.
4. PERIODS OF OPERATION ARE:  
MONDAY-FRIDAY, DURING SCHOOL DAYS  
7:05 TO 7:35AM  
8:50 TO 9:20AM  
2:35 TO 3:05PM  
3:40 TO 4:10PM

**FLASHING WARNING SIGN  
(SCHOOL CROSSING SYSTEM)  
OPERATION NOTES:**

1. THE FLASHING WARNING SIGNS SHALL BE NORMALLY DARK, SHALL INITIATE OPERATION ONLY UPON PEDESTRIAN ACTUATION, AND SHALL CEASE OPERATION 30 SECONDS AFTER THE PEDESTRIAN ACTUATION. THE TIMER SHALL BE RESET UPON EACH NUEW PUSH BUTTON ACTIVATION.
2. THE FLASHING WARNING SIGN ON BOTH SIDES OF THE STREET SHALL, WHEN ACTIVATED, SIMULTANEOUSLY COMMENCE OPERATION OF THEIR ALTERNATING FLASHING INDICATIONS AND SHALL CEASE OPERATION SIMULTANEOUSLY.
3. WHEN ACTIVATED, THE TWO YELLOW INDICATIONS SHALL FLASH IN ALTERNATING "WIG-WAG" FLASHING SEQUENCE (LEFT LIGHT ON, THEN RIGHT LIGHT ON).
4. YELLOW INDICATIONS SHALL BE FLASHED AT A RATE OF NOT LESS THAN 50 OR MORE THAN 60 TIMES PER MINUTE.
5. THE ILLUMINATED PERIOD OF EACH FLASH SHALL BE A MINIMUM OF 1/2 AND A MAXIMUM OF 2/3 OF THE TOTAL CYCLE.



DISTRICT	COUNTY	ROUTE	SECTION	SHEET	
	CUMBERLAND			13 OF 16	
WEST PENNSBORO TOWNSHIP					
REVISION NUMBER	REVISIONS			DATE	BY
2	POLE LOCATION(S) AND NOTES			11/12/18	TJT



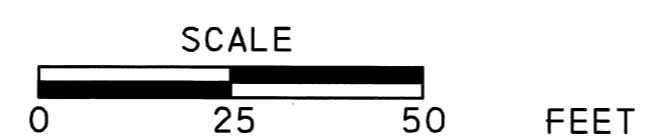
### CONSTRUCTION NOTES

1. ALL WORK TO CONFORM WITH LATEST PENNDOT PUBLICATION 408, RC-67M, AND PENNDOT TC-8800 SERIES.
2. SHOP DRAWINGS AND CATALOG CUTS ARE TO BE SUBMITTED TO THE MUNICIPALITY(IES) FOR REVIEW AND APPROVAL PRIOR TO CONSTRUCTION.

### LEGEND

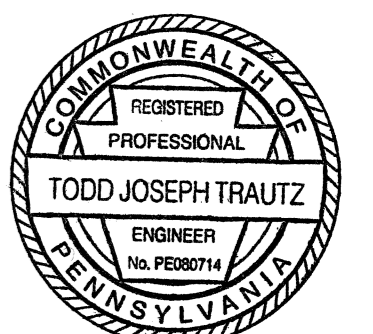
- ⊖ EXISTING SIGN
- ⊕ PROPOSED SIGN
- ⊗ EXISTING UTILITY POLE
- ⊙ EXISTING FLASHING WARNING DEVICE
- ⊠ ● PROPOSED TRAFFIC SIGNAL SUPPORT PEDESTAL/ IDENTIFYING NUMBER
- E— EXISTING ELECTRIC LINE
- ➔ DIRECTION OF TRAVEL
- DY/4" EXISTING DOUBLE YELLOW LINE/WIDTH
- W/4" EXISTING WHITE LINE/WIDTH

# BIG SPRING HIGH SCHOOL



PLANS PREPARED BY:

**Michael Baker INTERNATIONAL**



4431 NORTH FRONT STREET  
SECOND FLOOR  
HARRISBURG, PA 17110-1778

*Todd Joseph Trautz* 2/19/18  
TRAFFIC PROJECT MANAGER DATE  
REGISTERED PROFESSIONAL ENGINEER

DISTRICT	COUNTY	ROUTE	SECTION	SHEET	
	CUMBERLAND			14 OF 16	
WEST PENNSBORO TOWNSHIP					
REVISION NUMBER	REVISIONS			DATE	BY
2	POLE LOCATION(S) AND NOTES			11/12/18	TJT

### TRAFFIC SIGNAL SUPPORTS

STRUCTURE NO.	ITEM NO.	DESCRIPTION	QUANTITY	ROUTE	STATION	SIDE	OFFSET	PEDESTAL			REMARKS
								SHAFT	SIGNALS		
								H	M	N	
14	0951 4014 EACH	TRAFFIC SIGNAL SUPPORT, 14' PEDESTAL	1	MT ROCK RD	65+08 <del>64+99</del>	RT	*	14'	*	N/A	ALTERNATE 1, LOCATE OUTSIDE OF SWALE

\* - SEE FLASHING WARNING SIGN DETAIL

### MISCELLANEOUS

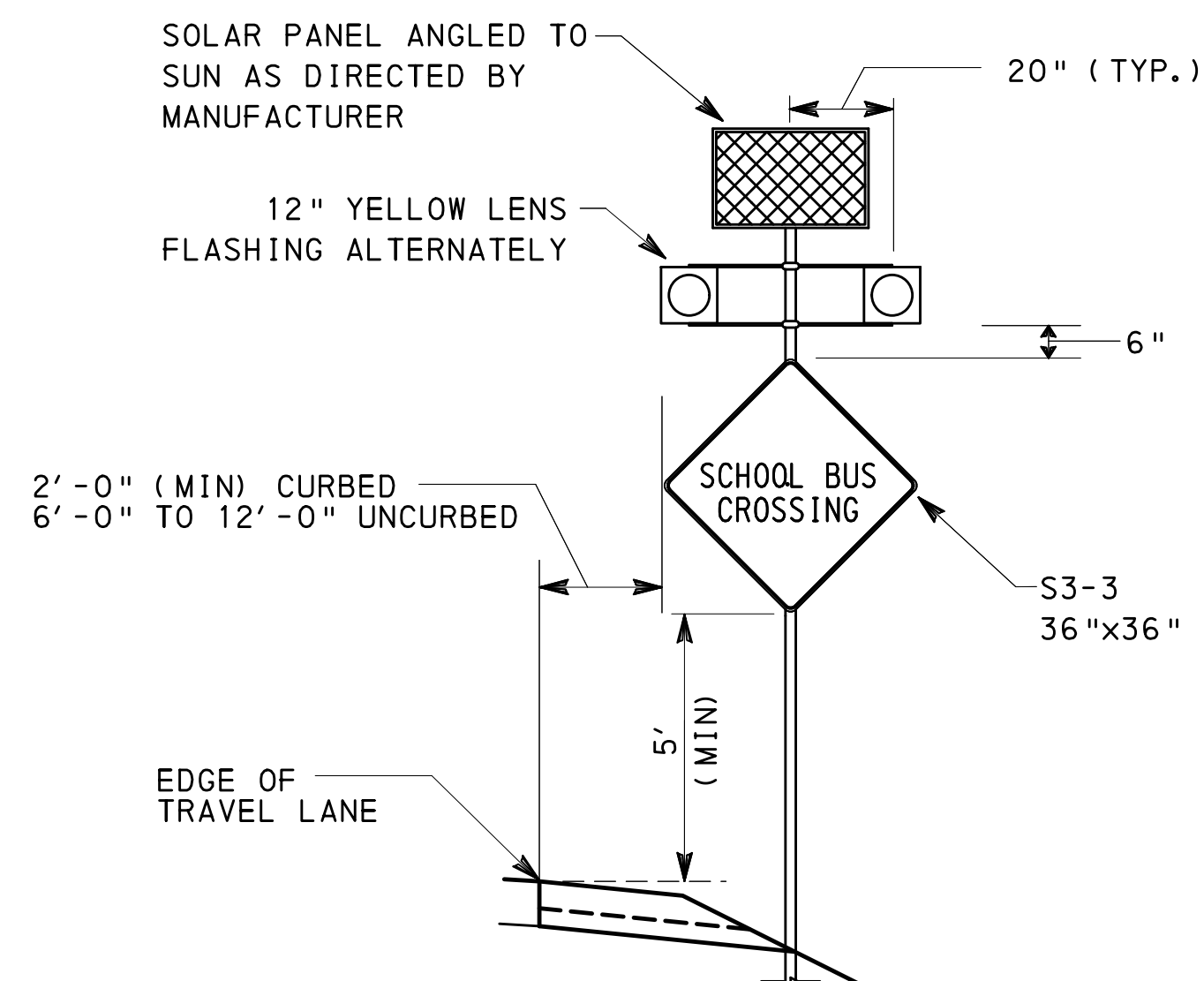
ITEM NO.	DESCRIPTION	QUANTITY	LOCATION	REMARKS
UNIT				
0936 0400 EACH	FLASHING WARNING SIGN	2	14 15	ALTERNATE 1 - SEE ITEM NO. 9000-0009 FOR FWS NETWORK CONTROL SYSTEM.
9000 0001 EACH	REMOVAL OF EXISTING FLASHING WARNING ASSEMBLY	1		ALTERNATE 1 LOCATED: STA 65+83
9000 0004 EACH	REMOVE EXISTING FLASHING WARNING ASSEMBLY (EXISTING SUPPORT POLE AND FOUNDATIONS TO REMAIN)	1	15	ALTERNATE 1

◆ - SEE SPECIAL PROVISIONS

### SIGNS

SIGNS				TYPE B 0931-0001		STRUC MTD 0936-0200	
DESCRIPTION	SIZE W x H	SERIES DESIGNATION	SQ FOOT EACH	QUAN	TOTAL SF	QUAN	TOTAL SF
SPEED LIMIT (40 MPH) **	24"x30"	R2-1	5.0	3	15		
LANE USE CONTROL (TWO LANES)	30"x30"	R3-8A (L-R)	6.3	1	6.3		
LANE USE CONTROL (TWO LANES)	30"x30"	R3-8A (L-S)	6.3	1	6.3		
LANE USE CONTROL (TWO LANES)	30"x30"	R3-8A (S-R)	6.3	1	6.3		
SPEED REDUCTION SIGN (25 MPH) **	36"x36"	W3-5	9.0	1	9.0		
SCHOOL BUS CROSSING	36"x36"	S3-3	9.0			2	18.0
				TOTAL	42.9		18.0

\*\* - SIGNS TO BE INSTALLED OR REMOVED BY WEST PENNSBORO TOWNSHIP, SIGNS AND POSTS TO BE PROVIDED BY CONTRACTOR.

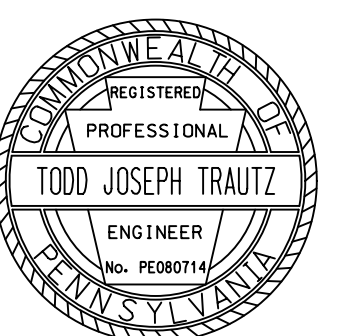


### ITEM NO. 0936-0400 FLASHING WARNING SIGN DETAIL

N. T. S.  
SEE OPERATION NOTES FOR FLASH INFORMATION

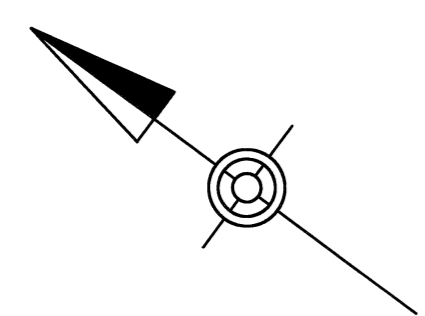
### OPERATION NOTES:

1. BEACONS SHALL BE FLASHED AT A RATE OF NOT LESS THAN 50 OR MORE THAN 60 TIMES PER MINUTE.
2. THE ILLUMINATED PERIOD OF EACH FLASH SHALL BE A MINIMUM OF 1/2 AND A MAXIMUM OF 2/3 OF THE TOTAL CYCLE.
3. FWD SHALL DISPLAY TWO ALTERNATELY FLASHING YELLOW BEACONS DURING PERIODS OF OPERATION AND REMAIN DARK AT ALL OTHER TIMES.
4. PERIODS OF OPERATION ARE:  
MONDAY-FRIDAY, DURING SCHOOL DAYS  
7:00 TO 7:45AM  
2:30 TO 3:15PM



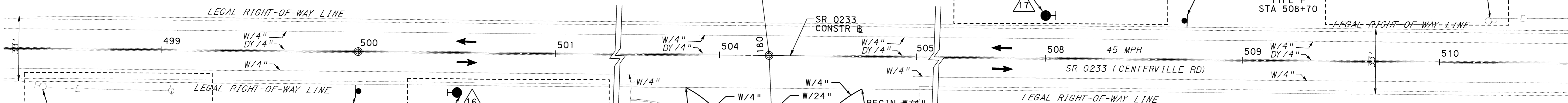
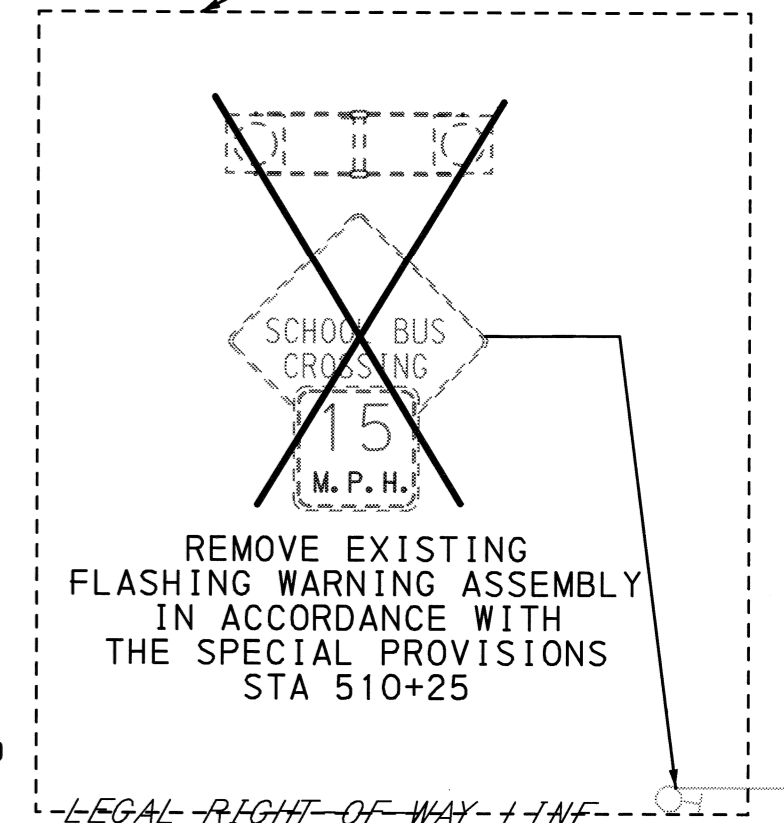
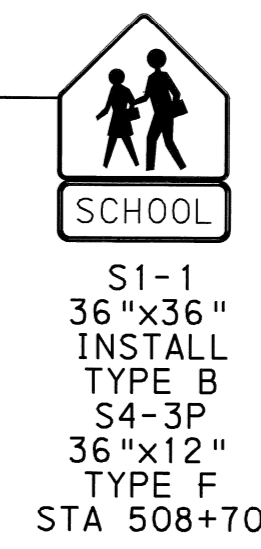
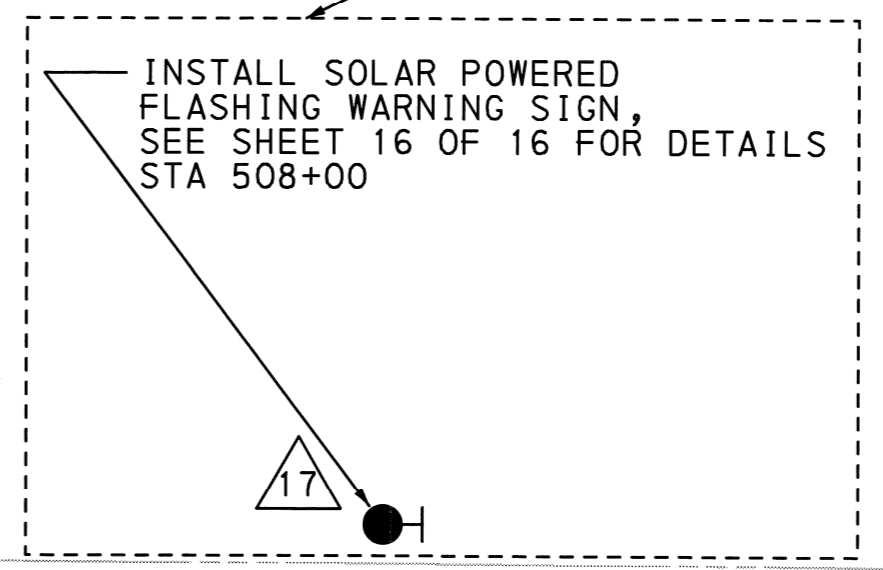


DISTRICT	COUNTY	ROUTE	SECTION	SHEET
	CUMBERLAND			15 OF 16
WEST PENNSBORO TOWNSHIP				
REVISION NUMBER	REVISIONS	DATE	BY	



333 CENTERVILLE ROAD  
MICKEY, JENNIE & WINFRED ROCKEY

ALTERNATE 1



334 CENTERVILLE ROAD  
BIG SPRING SCHOOL DISTRICT

### CONSTRUCTION NOTES

1. ALL WORK TO CONFORM WITH LATEST PENNDOT PUBLICATION 408, RC-67M, AND PENNDOT TC-8800 SERIES.
2. SHOP DRAWINGS AND CATALOG CUTS ARE TO BE SUBMITTED TO THE MUNICIPALITY(IES) FOR REVIEW AND APPROVAL PRIOR TO CONSTRUCTION.

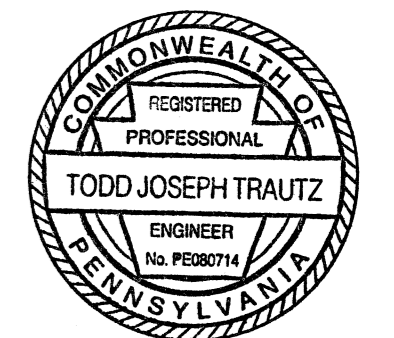
### LEGEND

- EXISTING SIGN
- PROPOSED SIGN
- EXISTING UTILITY POLE
- EXISTING FLASHING WARNING DEVICE
- PROPOSED TRAFFIC SIGNAL SUPPORT PEDESTAL/ IDENTIFYING NUMBER
- EXISTING ELECTRIC LINE
- DIRECTION OF TRAVEL
- EXISTING DOUBLE YELLOW LINE/WIDTH
- EXISTING WHITE LINE/WIDTH
- PROPOSED WHITE LINE/WIDTH

# OAK FLAT ELEMENTARY SCHOOL

PLANS PREPARED BY:

**Michael Baker INTERNATIONAL**



4431 NORTH FRONT STREET  
SECOND FLOOR  
HARRISBURG, PA 17110-1778

*Todd Joseph Trautz* 2/19/18  
TRAFFIC PROJECT MANAGER DATE  
REGISTERED PROFESSIONAL ENGINEER

10-LEED-2018 1A-191

DISTRICT	COUNTY	ROUTE	SECTION	SHEET	
	CUMBERLAND			16 OF 16	
WEST PENNSBORO TOWNSHIP					
REVISION NUMBER	REVISIONS			DATE	BY

### TRAFFIC SIGNAL SUPPORTS

STRUCTURE NO.	ITEM NO.	DESCRIPTION	QUANTITY	ROUTE	STATION	SIDE	OFFSET	PEDESTAL			REMARKS
								SHAFT	SIGNALS		
								H	M	N	
16	0951 4014 EACH	TRAFFIC SIGNAL SUPPORT, 14' PEDESTAL	1	SR 0233	500+50	RT	*	14'	*	N/A	ALTERNATE 1
17	0951 4014 EACH	TRAFFIC SIGNAL SUPPORT, 14' PEDESTAL	1	SR 0233	508+00	LT	*	14'	*	N/A	ALTERNATE 1

\* - SEE FLASHING WARNING SIGN DETAIL

### MISCELLANEOUS

ITEM NO.	DESCRIPTION	QUANTITY	LOCATION	REMARKS
UNIT				
0936 0400 EACH	FLASHING WARNING SIGN	2	16 17	ALTERNATE 1 - SEE ITEM NO. 9000-0009 FOR FWS NETWORK CONTROL SYSTEM.
9000 0001 EACH	REMOVAL OF EXISTING FLASHING WARNING ASSEMBLY	2		ALTERNATE 1 LOCATED: STA 498+40 STA 510+25

◆ - SEE SPECIAL PROVISIONS

### SIGNS

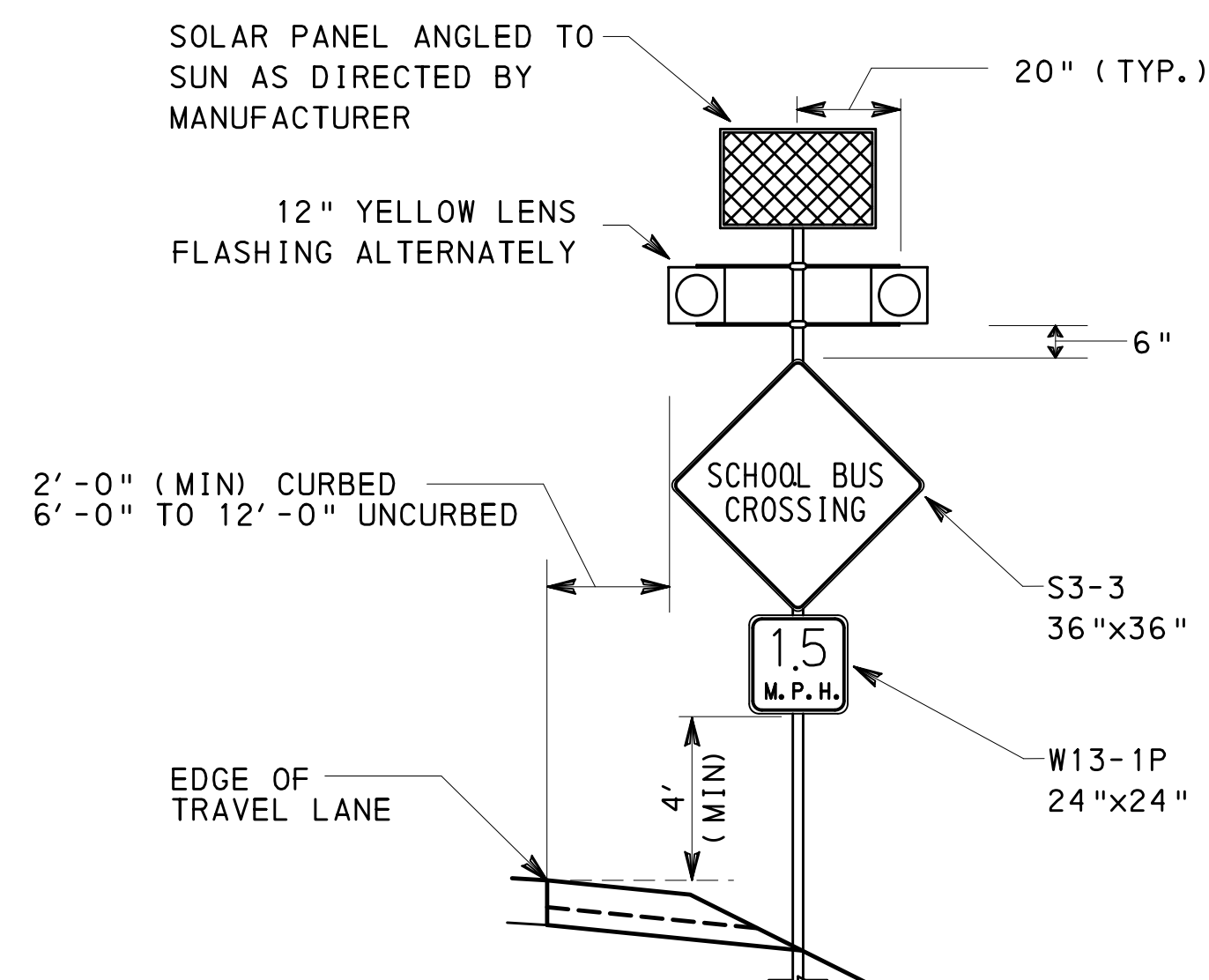
DESCRIPTION	SIZE W x H	SERIES DESIGNATION	SQ FOOT EACH	TYPE B 0931-0001		TYPE F 0935-0001		STRUC MTD 0936-0200	
				QUAN	TOTAL SF	QUAN	TOTAL SF	QUAN	TOTAL SF
SCHOOL	36"x36"	S1-1	9.0	2.0	18.0				
SCHOOL BUS CROSSING	36"x36"	S3-3	9.0					2	18.0
SCHOOL (PANEL)	24"x8"	S4-3P	1.3			2	2.6		
ADVISORY SPEED PLAQUE (15 MPH)	24"x24"	W13-1P	4.0					2	8.0
TOTAL				18.0		2.6		26.0	

### PAVEMENT MARKINGS

ITEM NUMBER	DESCRIPTION	UNIT	TOTAL
0901-0330	4" STANDARD PAVEMENT MARKINGS, PAINT & BEADS, WHITE	LF	275
0960-0021	24" WHITE HOT THERMOPLASTIC MARKINGS	LF	30
0962-1000	4" WHITE WATERBORNE PAVEMENT MARKINGS	LF	275
0963-0001	PAVEMENT MARKING REMOVAL	SF	31

### OPERATION NOTES:

- BEACONS SHALL BE FLASHED AT A RATE OF NOT LESS THAN 50 OR MORE THAN 60 TIMES PER MINUTE.
- THE ILLUMINATED PERIOD OF EACH FLASH SHALL BE A MINIMUM OF 1/2 AND A MAXIMUM OF 2/3 OF THE TOTAL CYCLE.
- FWD SHALL DISPLAY TWO ALTERNATELY FLASHING YELLOW BEACONS DURING PERIODS OF OPERATION AND REMAIN DARK AT ALL OTHER TIMES.
- PERIODS OF OPERATION ARE:  
MONDAY-FRIDAY, DURING SCHOOL DAYS  
8:45 TO 9:30AM  
3:30 TO 4:00PM



### ITEM NO. 0936-0400 FLASHING WARNING SIGN DETAIL

N. T. S.  
SEE OPERATION NOTES FOR FLASH INFORMATION

