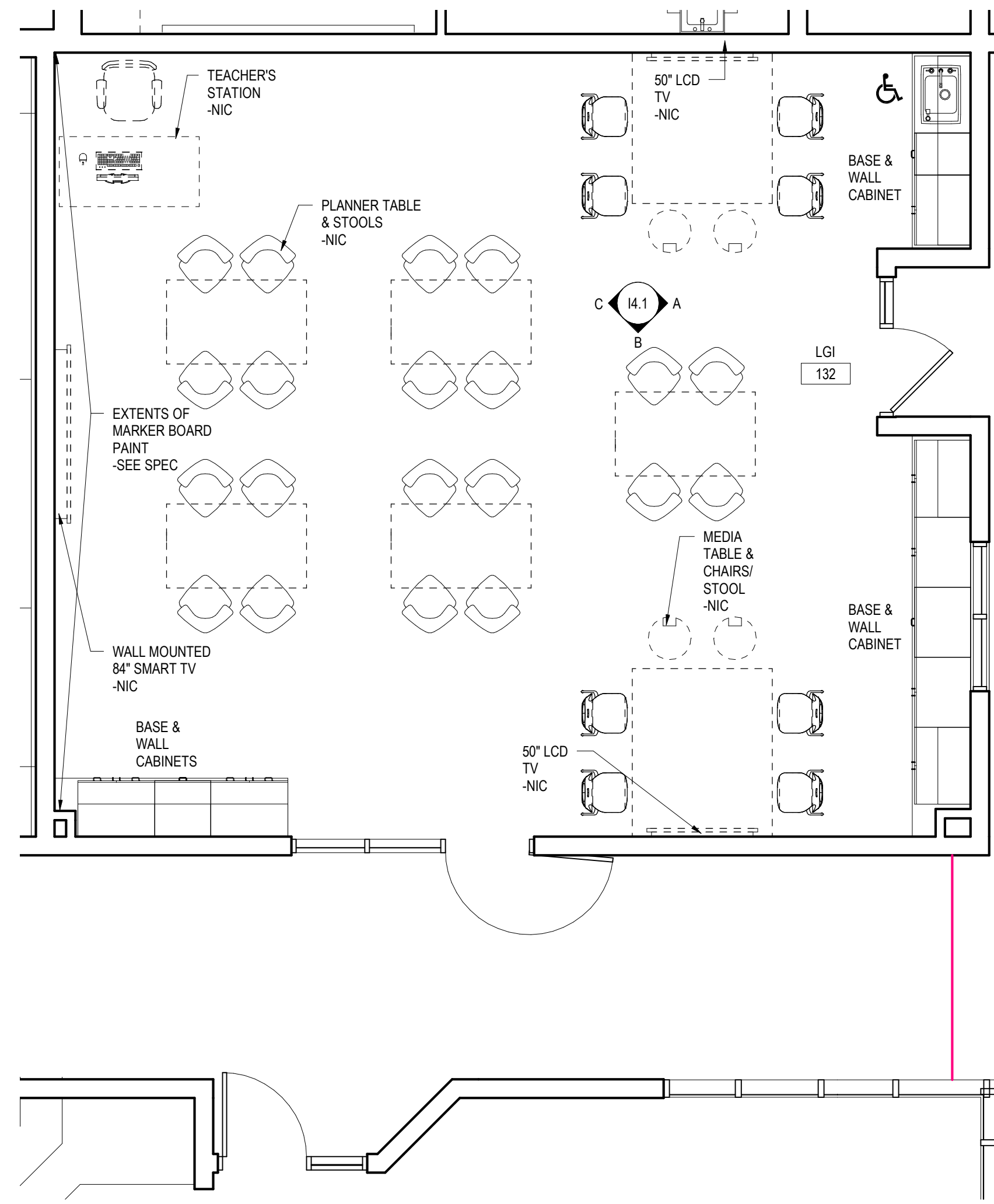
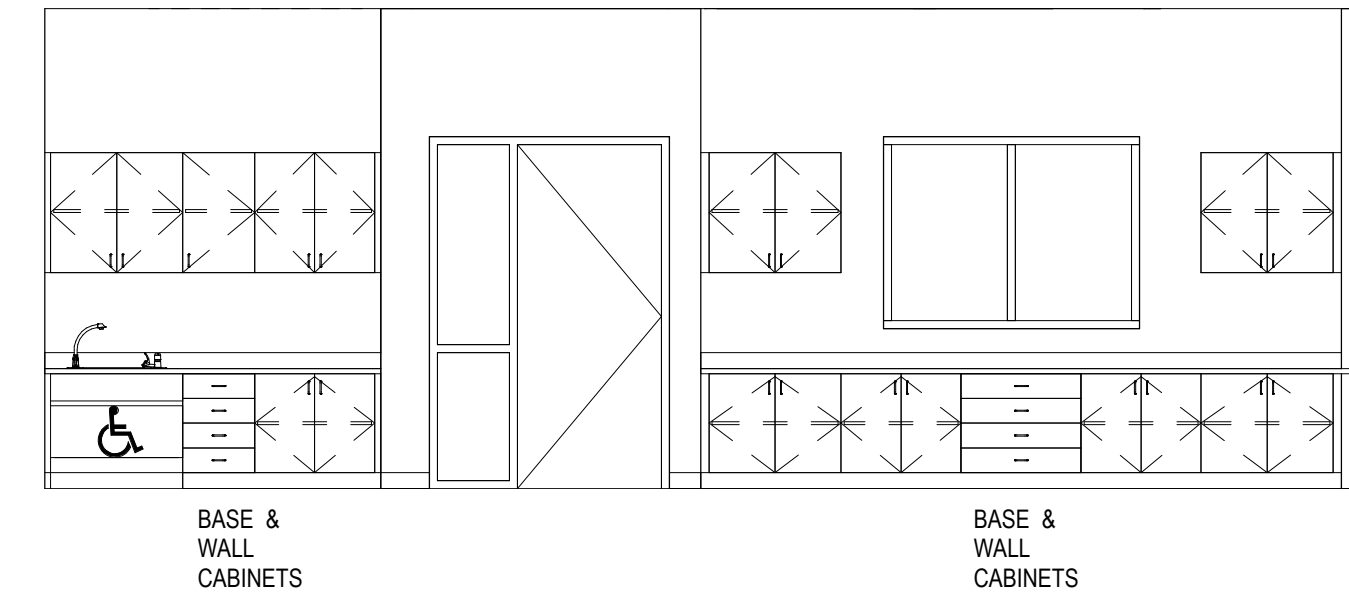


NOT FOR CONSTRUCTION

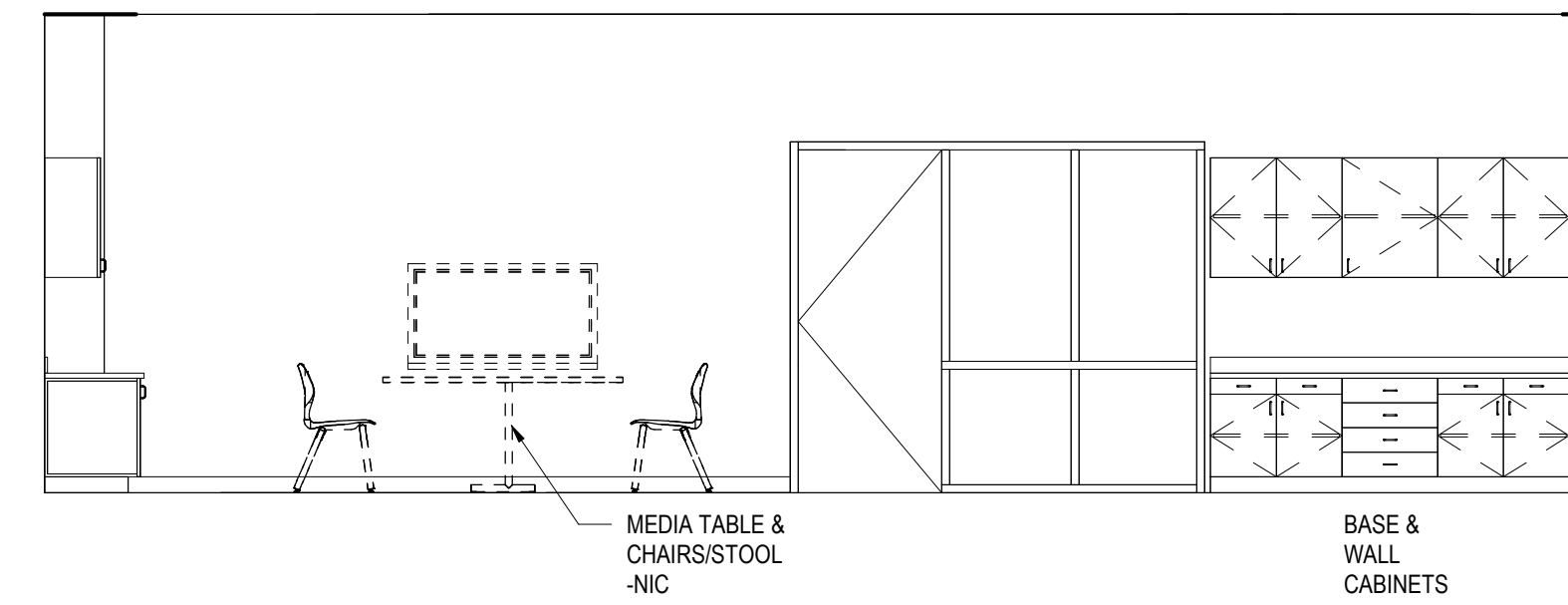
ALL REPORTS, PLANS, SPECIFICATIONS AND COMPUTER FILES RELATING TO THIS PROJECT ARE THE PROPERTY OF CRABTREE ROHRBAUGH & ASSOCIATES. CRABTREE ROHRBAUGH & ASSOCIATES RETAINS ALL COMMON LAW, STATUTE AND OTHER RESERVED RIGHTS INCLUDING THE COPYRIGHT THEREIN. REPRODUCTION OF THE MATERIAL HEREIN OR SUBSTANTIAL USE WITHOUT WRITTEN PERMISSION OF CRABTREE ROHRBAUGH & ASSOCIATES VIOLATES THE COPYRIGHT LAWS OF THE UNITED STATES AND WILL BE SUBJECT TO LEGAL PROSECUTION.
© CRABTREE ROHRBAUGH & ASSOCIATES, INC. 2018



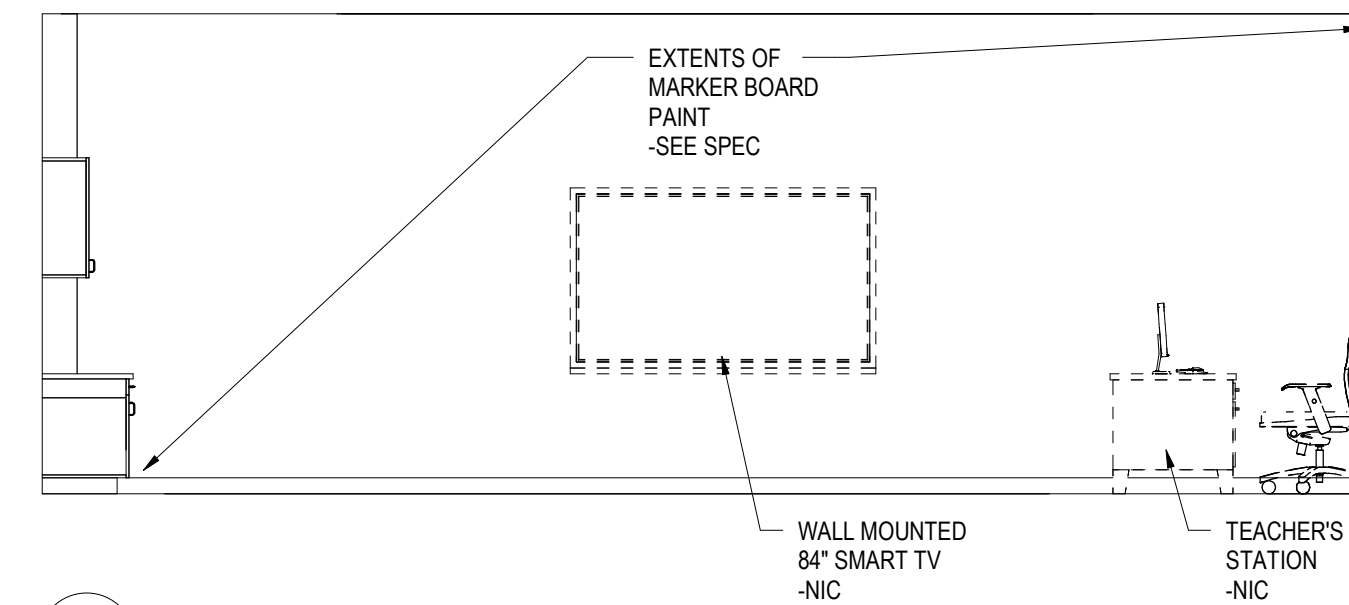
1 LARGE GROUP INSTRUCTION
1/4" = 1'-0"



A INTERIOR ELEVATION A
1/4" = 1'-0"



B INTERIOR ELEVATION B
1/4" = 1'-0"



C INTERIOR ELEVATION C
1/4" = 1'-0"

REVISIONS

NO.	DATE	BY	DESCRIPTION OF CHANGES

CRABTREE ROHRBAUGH & ASSOCIATES - ARCHITECTS
 BALTIMORE, MARYLAND
 CHARLOTTESVILLE, VIRGINIA
 WHITE SULPHUR SPRINGS, WEST VIRGINIA
 www.cra-architects.com
 401 EAST WINDING HILL ROAD
 MECHANICSBURG PA 17055
 717-458-0272

RENOVATIONS TO
 OAK FLAT ELEMENTARY SCHOOL
 BIG SPRING SCHOOL DISTRICT

GENERAL NOTE IN REFERENCE TO 14.1	
1. ALL SINKS SHALL RECEIVE BUBBLERS.	
GRADE K-5 MOUNTING HEIGHT SCHEDULE	
MARKER BOARD	2'-6" AFF TO BOTTOM EDGE
TACK BOARD	2'-6" AFF TO BOTTOM EDGE
BASE CABINETS	2'-6" AFF TO TOP OF CABINET
WALL CABINETS	7'-0" AFF TO TOP OF CABINET
SMART TV - OWNER PROVIDED/OWNER INSTALLED	2'-6" AFF TO BOTTOM EDGE

THE UNDERSIGNED IS (ARE) AUTHORIZED BY THE SCHOOL DISTRICT TO REVIEW AND ACCEPT THE DESIGN OF THE BUILDING SPACE(S) REPRESENTED IN THIS DRAWING. ACCEPTANCE INCLUDES SIZE, SHAPE, ROOM LAYOUT, AND CONTENTS, INCLUDING ITEMS NOT IN CONTRACT (N.I.C.) ACCEPTANCE INDICATES THAT THE UNDERSIGNED HAS REVIEWED THE INFORMATION WITH THE ARCHITECT AND IS AUTHORIZING THE ARCHITECT TO IMPLEMENT THE DESIGN IN THE FINAL CONSTRUCTION DOCUMENTS.

ACCEPTED AS PRESENTED - SIGN _____ DATE _____
 PRINT _____
 ACCEPTED AS PRESENTED - SIGN _____ DATE _____
 PRINT _____
 ACCEPTED W/COMMENTS - SIGN _____ DATE _____
 PRINT _____
 ACCEPTED W/COMMENTS - SIGN _____ DATE _____
 PRINT _____

COMMENTS
 1. _____
 2. _____
 3. _____

GENERAL NOTES TO APPLY TO ALL 14 DRAWINGS

1. MOUNTING HEIGHT SCHEDULE IS APPLICABLE TO MOST ROOMS. IN INSTANCE WHERE NOTE/DETAILS ON DRAWINGS DO NOT COINCIDE WITH THE SCHEDULE. THE DRAWINGS TAKE PRECEDENCE.
2. ALL BASE CABINETS SHALL RECEIVE A CONTINUOUS 1-1/4" THICK LAMINATE COUNTERTOP WITH A 4" BACKSPASH UNLESS NOTED OTHERWISE. THE DEPTH OF THE COUNTERTOP SHALL EXTEND 3/4" PAST THE DEPTH OF THE BASE CABINET.
3. COUNTERTOPS THAT RETURN INTO A WALL(S) SHALL RECEIVE BACKSPASH THAT WRAPS CORNER ALONG WALL(S).
4. PROVIDE CHAMFERED EDGE CORNER FOR ALL COUNTERTOPS ADJACENT TO ALL TALL STORAGE UNITS.
5. WHERE COLUMNS, WINDOWS OR OTHER BUILDING COMPONENTS CONFLICT WITH CASEWORK DIMENSIONAL REQUIREMENTS. FIELD VERIFY DIMENSIONS AND PROVIDE CUSTOM UNIT TO ALLOW PROPER FITTING.
6. ALL EXPOSED ENDS OF CASEWORK SHALL RECEIVE FINISHES END PANELS.
7. LAMINATE COLOR FOR INTERIOR OF OPEN CABINETS SHALL MATCH EXTERIOR LAMINATE COLOR.
8. STAINLESS STEEL SINKS, FAUCETS, AND BUBBLERS SHALL BE PROVIDED AND INSTALLED BY PLUMBING CONTRACTOR.
9. ALL VISUAL DISPLAY AREAS (MARKER BOARDS AND/OR TACK BOARDS) 10'-0"W OR LONGER SHALL RECEIVE 2"H MAP RAIL THAT SPANS FROM VERTICAL EDGE TO VERTICAL EDGE.
10. PROVIDE WOOD LOCKING IN METAL STUD WALLS, PER MANUFACTURER'S RECOMMENDATIONS. TO RECEIVE THE TELEVISION WALL BRACKET.
11. IN ROOMS RECEIVING RESILIENT BASE, ADHERE TO ALL WALLS. BASE CABINET TOE KICKS AND EXPOSED END PANELS. REFER TO SPECIFICATIONS FOR LOCATION OF 4" AND 6" BASE.
12. SEE REFLECTED CEILING PLANS FOR LOCATION OF WINDOW TREATMENTS.
13. TELEPHONE UNITS AND SYSTEMS ARE NOT IN CONTRACT.
14. COORDINATE ALL LARGE SCALE PLANS WITH MECHANICAL, ELECTRICAL AND PLUMBING DRAWINGS.
15. NIC = NOT IN CONTRACT
16. WHEN DESCRIPTION AND MODEL NUMBER IN CASEWORK AND EQUIPMENT SCHEDULE CONFLICT, THE DESCRIPTION TAKES PRECEDENCE.
17. OPP = OPPOSITE HAND.



LARGE SCALE LAYOUT LARGE GROUP INSTRUCTION
 PLOT SCALE: 1/4" = 1'-0"
 FILENAME:
 DATE: 09/25/18

PROJECT
 3196.4
 14.1