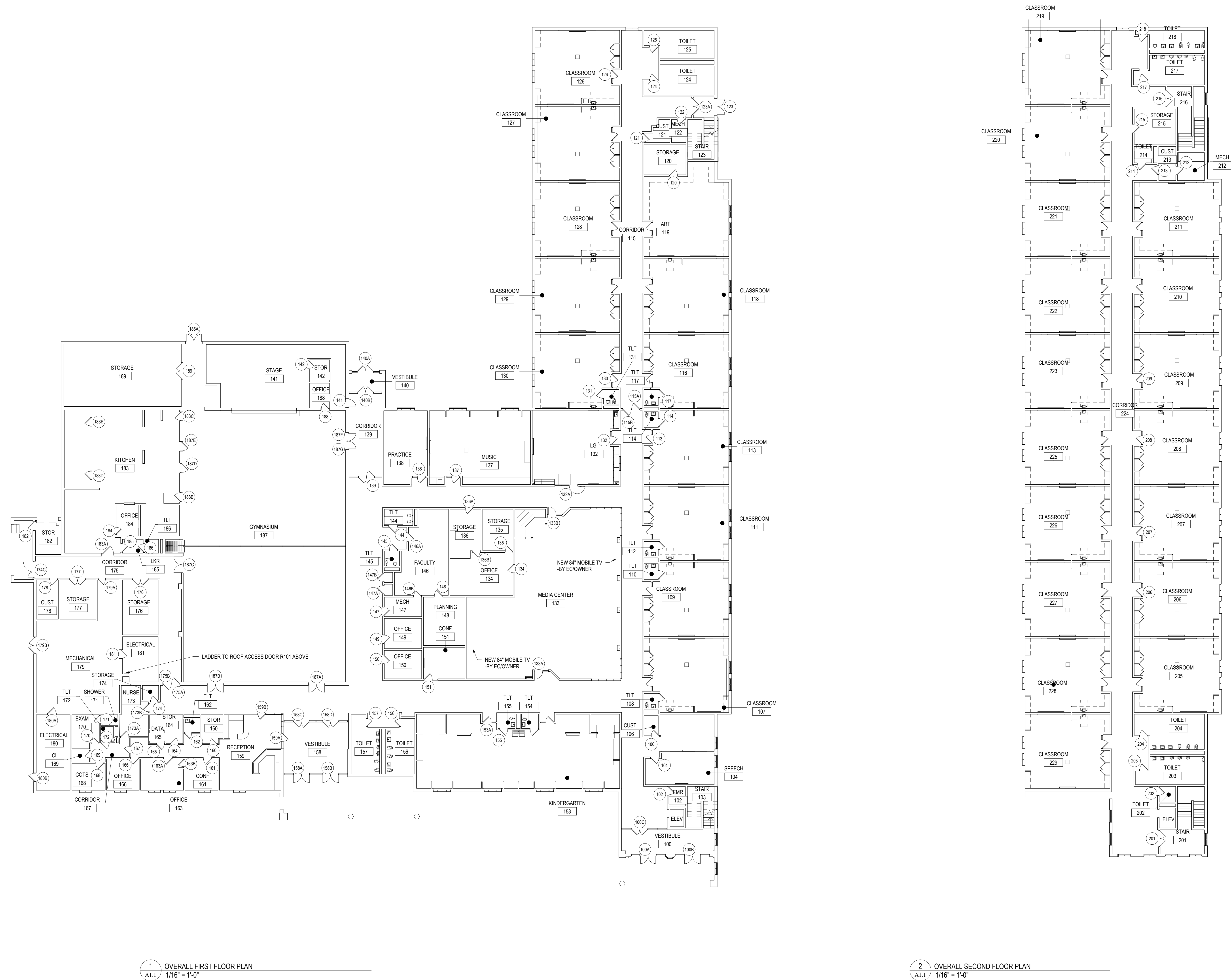


NOT FOR CONSTRUCTION

ALL REPORTS, PLANS, SPECIFICATIONS AND COMPUTER FILES RELATING TO THIS PROJECT ARE THE PROPERTY OF CRABTREE ROHRBAUGH & ASSOCIATES. CRABTREE ROHRBAUGH & ASSOCIATES RETAINS ALL COMMON LAW, STATUTE AND OTHER RESERVED RIGHTS INCLUDING THE COPYRIGHT THEREIN. REPRODUCTION OF THE MATERIAL HEREIN OR SUBSTANTIAL USE WITHOUT WRITTEN PERMISSION OF CRABTREE ROHRBAUGH & ASSOCIATES VIOLATES THE COPYRIGHT LAWS OF THE UNITED STATES AND WILL BE SUBJECT TO LEGAL PROSECUTION.  
© CRABTREE ROHRBAUGH & ASSOCIATES, INC 2018



1 OVERALL FIRST FLOOR PLAN  
A1.1 1/16" = 1'-0"

2 OVERALL SECOND FLOOR PLAN  
A1.1 1/16" = 1'-0"

REVISIONS

NO.	DATE	NAME	DESCRIPTION OF CHANGES

**CRABTREE ROHRBAUGH & ASSOCIATES - ARCHITECTS**  
 401 EAST WINDING HILL ROAD  
 MECHANICSBURG PA 17055  
 717-458-0272

BALTIMORE, MARYLAND  
 CHARLOTTEVILLE, VIRGINIA  
 WHITE SULPHUR SPRINGS, WEST VIRGINIA

www.cra-architects.com

RENOVATIONS TO  
**OAK FLAT ELEMENTARY SCHOOL**  
 BIG SPRING SCHOOL DISTRICT



OVERALL FLOOR PLANS  
 PROJECT SCALE  
 1/16" = 1'-0"  
 FILENAME:  
 DATE: DECEMBER 27, 2018

PROJECT  
 3196.4  
**A1.1**

- GENERAL NOTES:
- ALL DOOR JAMBS SHALL BE LOCATED 4" FROM INSIDE CORNER OF WALL ON HINGE SIDE UNLESS OTHERWISE INDICATED.
  - COORDINATE LOCATION OF MEP EQUIPMENT, DEVICES, OUTLET BOXES, ETC. WITH OTHER EQUIPMENT AND FINISH SCHEDULE PRIOR TO INSTALLATION.
  - ALL WALL LAYOUT DIMENSIONS ARE FROM FACE OF STUD & FACE OF CMU UNLESS OTHERWISE NOTED.