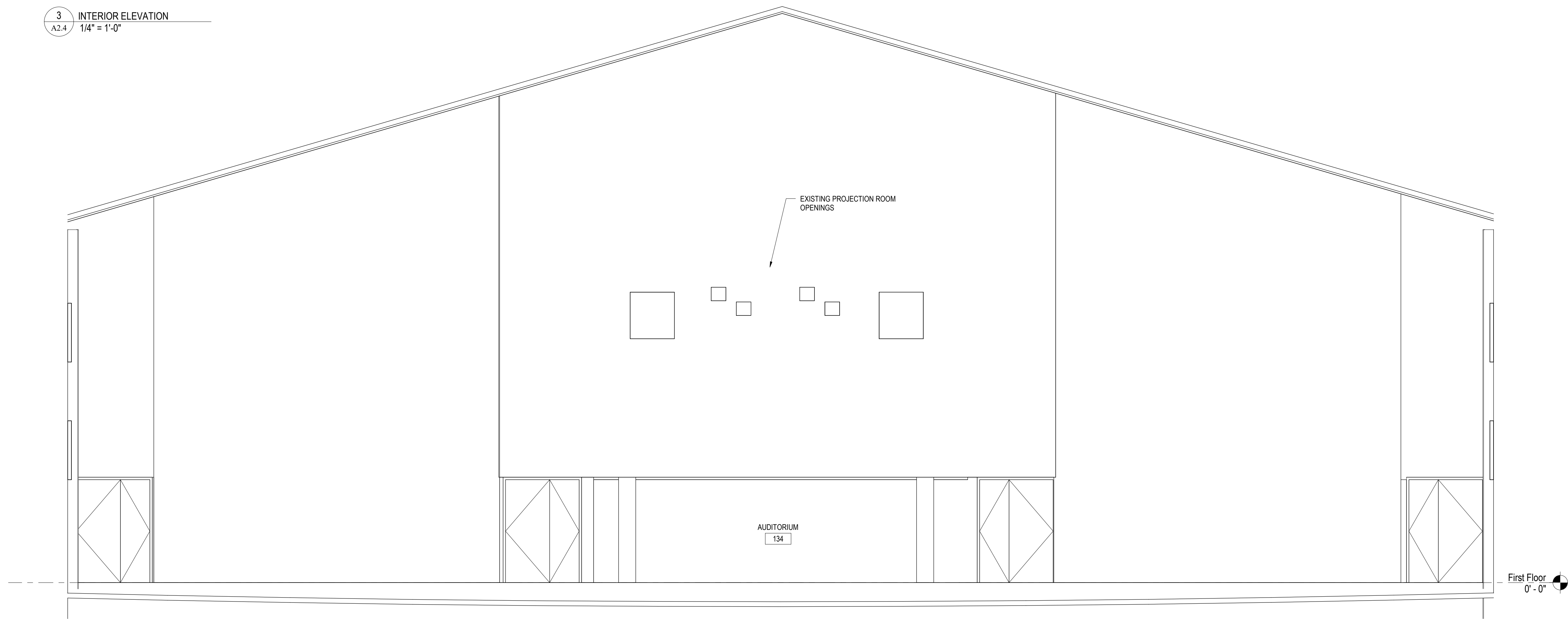
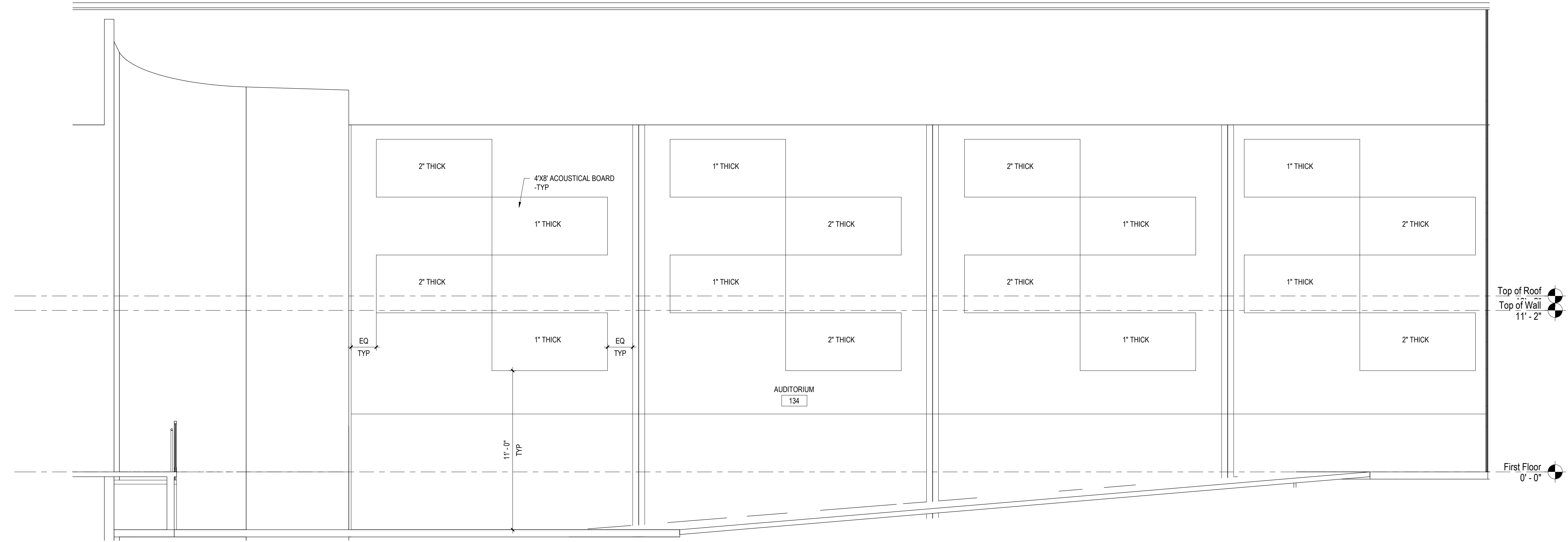


3 INTERIOR ELEVATION
A2.4 / 1/4" = 1'-0"



1 INTERIOR ELEVATION
A2.4 / 1/4" = 1'-0"



2 INTERIOR ELEVATION
A2.4 / 1/4" = 1'-0"

ALL REPORTS, PLANS SPECIFICATIONS AND COMPUTER FILES RELATING TO THIS PROJECT ARE THE PROPERTY OF CRABTREE ROHRBAUGH & ASSOCIATES. CRABTREE ROHRBAUGH & ASSOCIATES RETAINS ALL COMMON LAW, STATUTE AND OTHER RESERVED RIGHTS INCLUDING THE COPYRIGHT. NO PARTS, REPRODUCTIONS OR INFORMATION FROM THIS PROJECT MAY BE REPRODUCED OR TRANSMITTED IN ANY FORM OR BY ANY MEANS, ELECTRONIC OR MECHANICAL, INCLUDING PHOTOCOPYING, RECORDING, OR BY ANY INFORMATION STORAGE AND RETRIEVAL SYSTEM, WITHOUT THE WRITTEN PERMISSION OF CRABTREE ROHRBAUGH & ASSOCIATES. VIOLATION OF THE COPYRIGHT LAWS OF THE UNITED STATES AND WILL BE SUBJECT TO LEGAL PROSECUTION.
© CRABTREE ROHRBAUGH & ASSOCIATES, INC 2019

REVISIONS

NO.	DATE	DESCRIPTION OF CHANGES

CRABTREE ROHRBAUGH & ASSOCIATES - ARCHITECTS
 TOWSON, MARYLAND
 CHARLOTTEVILLE, VIRGINIA
 WHITE SULPHUR SPRINGS, WEST VIRGINIA
 www.cra-architects.com

401 EAST WINDING HILL ROAD
 MECHANICSBURG PA 17055
 717-458-0272

RENOVATIONS TO
BIG SPRING MIDDLE SCHOOL
 BIG SPRING SCHOOL DISTRICT
 43 MOUNT ROCK ROAD, NEWVILLE PA 17241

INTERIOR ELEVATIONS
 PROJECT
 3196.2
 SCALE
 1/4" = 1'-0"
 FILENAME
 DATE
 JANUARY 7, 2019

A2.4