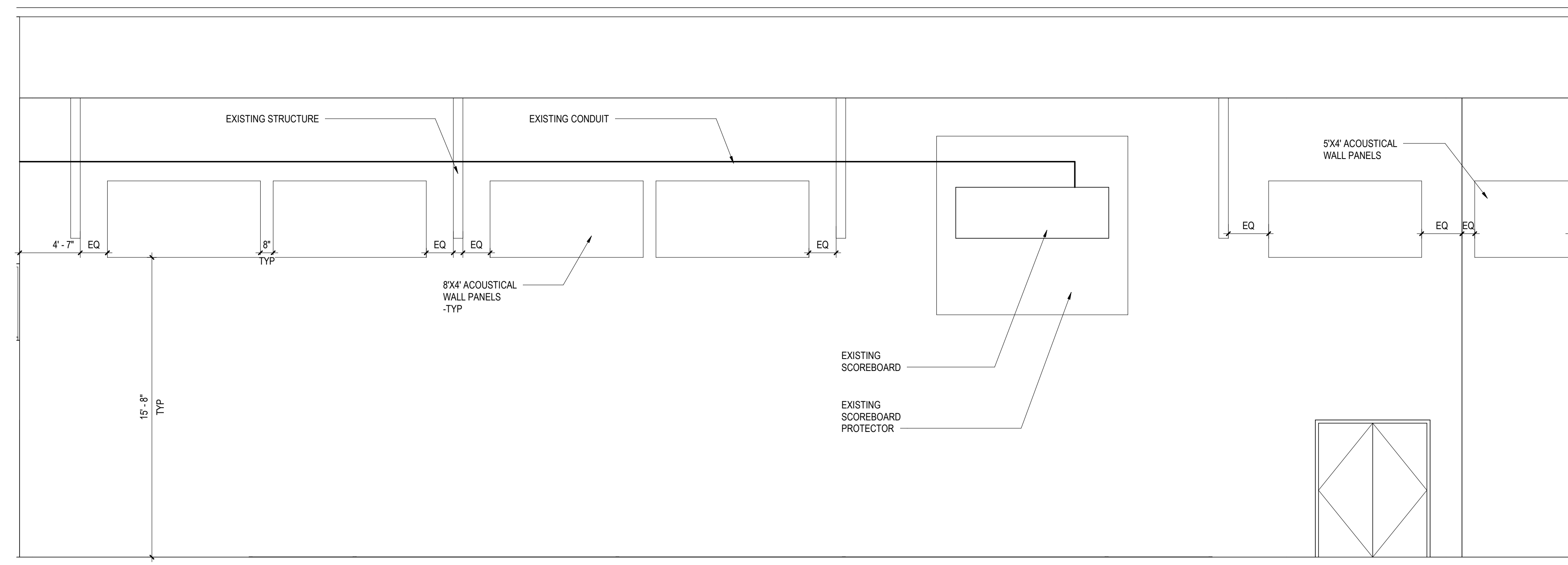
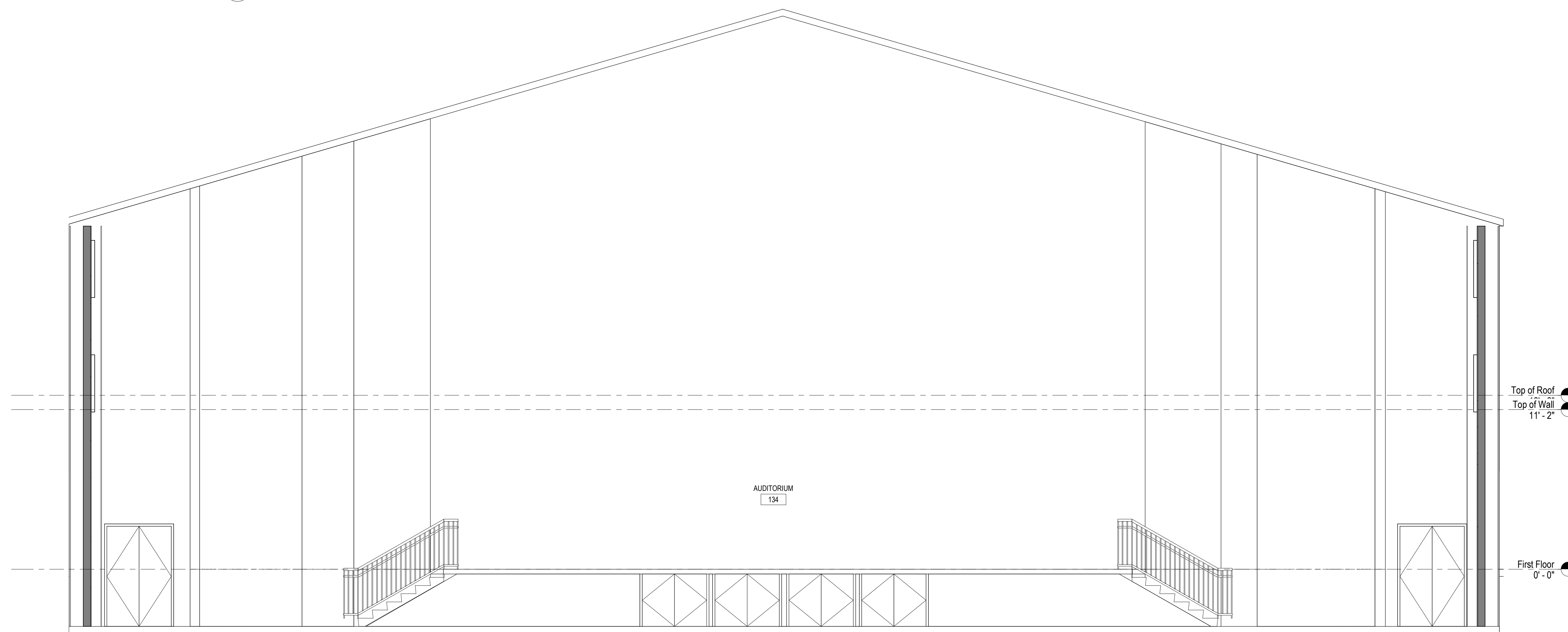


1 INTERIOR ELEVATION  
A2.3 1/4" = 1'-0"



2 INTERIOR ELEVATION  
A2.3 1/4" = 1'-0"



3 INTERIOR ELEVATION  
A2.3 1/4" = 1'-0"

ALL REPORTS, PLANS, SPECIFICATIONS AND COMPUTER FILES RELATING TO THIS PROJECT ARE THE PROPERTY OF CRABTREE ROHRBAUGH & ASSOCIATES. CRABTREE ROHRBAUGH & ASSOCIATES RETAINS ALL COMMON LAW, STATUTORY AND OTHER RESERVED RIGHTS IN INCLUDING THE COPYRIGHTED RIGHTS REPRODUCTION OF THIS MATERIAL. ANY REPRODUCTION OF THIS MATERIAL WITHOUT THE WRITTEN PERMISSION OF CRABTREE ROHRBAUGH & ASSOCIATES VIOLATES THE COPYRIGHT LAWS OF THE UNITED STATES AND WILL BE SUBJECT TO LEGAL PROSECUTION.  
© CRABTREE ROHRBAUGH & ASSOCIATES, INC 2018

REVISIONS		
NO.	DATE	DESCRIPTION OF CHANGES

**CRABTREE ROHRBAUGH & ASSOCIATES - ARCHITECTS**  
 TOWSON, MARYLAND  
 CHARLOTTEVILLE, VIRGINIA  
 WHITE SULPHUR SPRINGS, WEST VIRGINIA  
 www.cra-architects.com  
 401 EAST WINDING HILL ROAD  
 MECHANICSBURG PA 17055  
 717-458-0272

RENOVATIONS TO  
**BIG SPRING MIDDLE SCHOOL**  
 BIG SPRING SCHOOL DISTRICT  
 43 MOUNT ROCK ROAD, NEWVILLE PA 17241

**CR**

INTERIOR ELEVATIONS

PROJECT  
3196.2

SCALE  
1/4" = 1'-0"

FILENAME:  
A2.3

DATE  
JANUARY 7, 2019