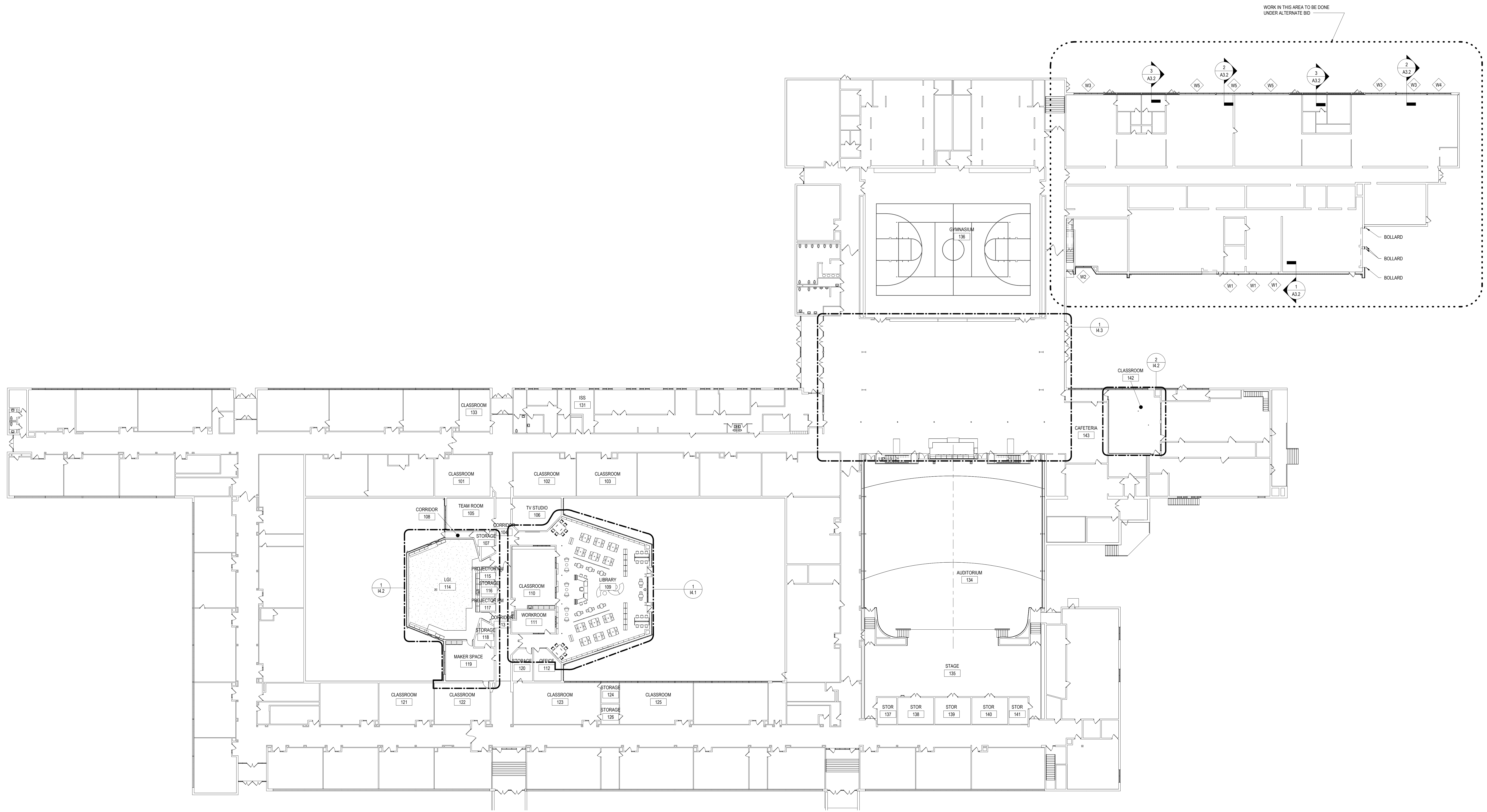


ALL REPORTS, PLANS, SPECIFICATIONS AND COMPUTER FILES RELATING TO THIS PROJECT ARE THE PROPERTY OF CRABTREE, ROHRBAUGH & ASSOCIATES. CRABTREE ROHRBAUGH & ASSOCIATES RETAINS ALL COMMON LAW, STATUTE AND OTHER RESERVED RIGHTS INCLUDING THE COPYRIGHT, PATENT, REPRODUCTION RIGHTS AND OTHER RIGHTS IN THE DESIGN AND CONSTRUCTION OF THE PROJECT. ANY REPRODUCTION OF THIS MATERIAL, IN WHOLE OR IN PART, WITHOUT THE WRITTEN PERMISSION OF CRABTREE, ROHRBAUGH & ASSOCIATES VIOLATES THE COPYRIGHT LAWS OF THE UNITED STATES AND WILL BE SUBJECT TO LEGAL PROSECUTION. © CRABTREE, ROHRBAUGH & ASSOCIATES, INC 2018



1 OVERALL FIRST FLOOR PLAN
A1.1
1" = 20'-0"

- GENERAL NOTES:**
1. ALL DOOR JAMBS SHALL BE LOCATED 6" FROM INSIDE CORNER OF WALL ON HINGE SIDE UNLESS OTHERWISE INDICATED.
 2. COORDINATE LOCATION OF MEP EQUIPMENT, DEVICES, OUTLET BOXES, ETC. WITH OTHER EQUIPMENT AND FINISH SCHEDULE PRIOR TO INSTALLATION.
 3. GC TO PROVIDE ALL LOUVERS COORDINATE WITH MEP DRAWINGS.
 4. ALL WALL LAYOUT DIMENSIONS ARE FROM FACE OF STUD & FACE OF CMU UNLESS OTHERWISE NOTED.

REVISIONS

NO.	DATE	BY	DESCRIPTION OF CHANGES

CRABTREE ROHRBAUGH & ASSOCIATES - ARCHITECTS
 TOWSON, MARYLAND
 CHARLOTTEVILLE, VIRGINIA
 WHITE SULPHUR SPRINGS, WEST VIRGINIA

401 EAST WINDING HILL ROAD
 MECHANICSBURG PA 17055
 717-458-0272

RENOVATIONS TO
BIG SPRING MIDDLE SCHOOL
 BIG SPRING SCHOOL DISTRICT
 43 MOUNT ROCK ROAD, NEWVILLE PA 17241

OVERALL FIRST FLOOR PLAN
 PROJECT 3196.2
 PLOT SCALE: 1" = 20'-0"
 FILENAME:
 DATE: JANUARY 16, 2019

A1.1