



Big Spring School District

Act 34 Hearing

Monday, June 19, 2017

6:00PM



Big Spring SD 115210503

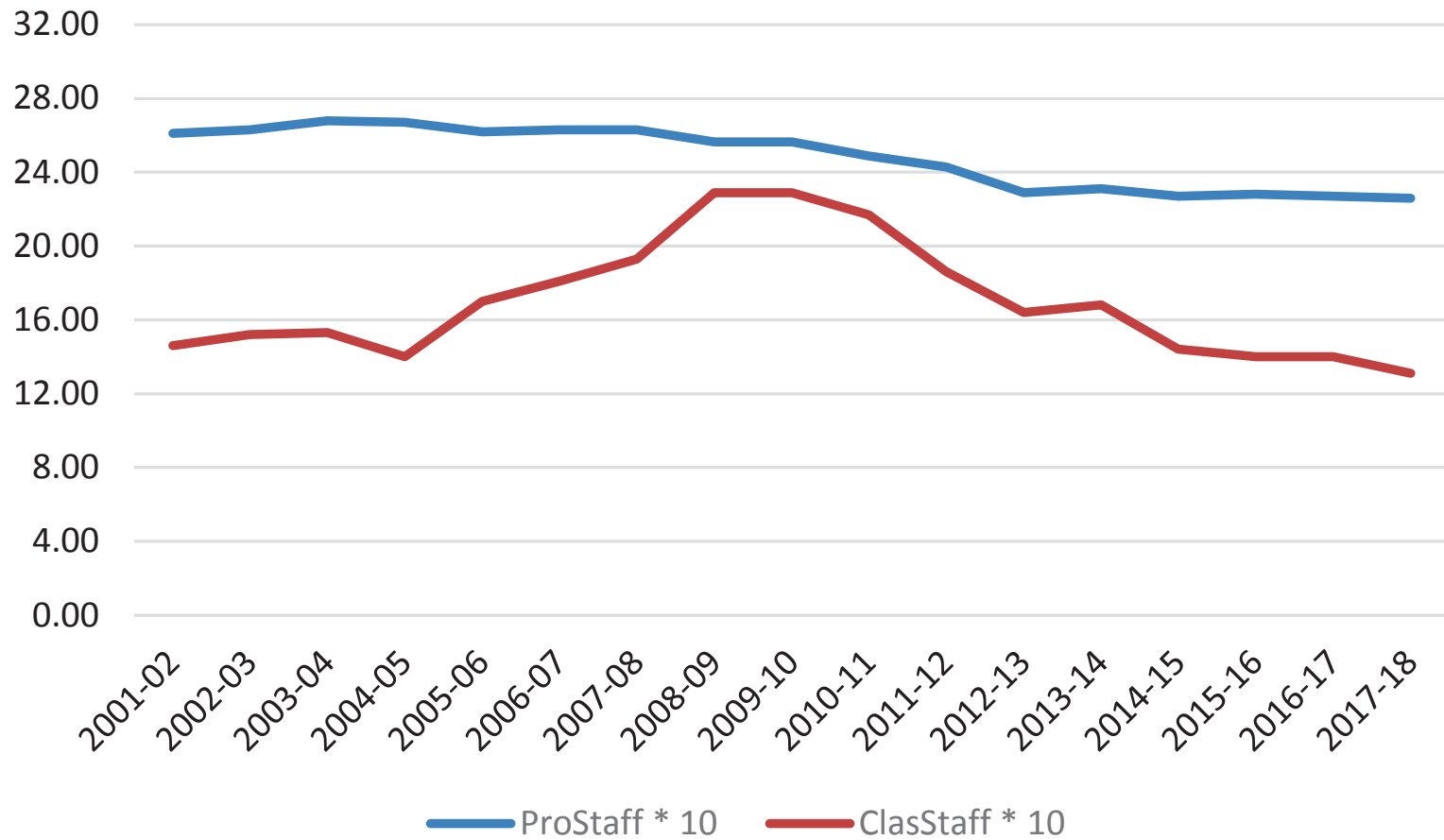
<u>YEAR</u>	<u>K</u>	<u>1</u>	<u>2</u>	<u>3</u>	<u>4</u>	<u>5</u>	<u>6</u>	<u>7</u>	<u>8</u>	<u>9</u>	<u>10</u>	<u>11</u>	<u>12</u>	<u>Total</u>
Actual														
2011 - 2012	185	168	207	181	186	209	234	247	220	227	265	221	230	2780
2012 - 2013	176	184	172	198	196	203	215	226	243	219	214	251	211	2708
2013 - 2014	189	176	180	170	199	192	197	222	229	242	219	195	241	2651
2014 - 2015	221	190	182	184	175	208	194	191	216	230	241	203	181	2616
2015 - 2016	171	215	181	184	189	182	205	190	186	216	233	234	202	2588
Projection														
2016 - 2017	166	214	214	180	191	196	182	202	187	186	213	219	225	2575
2017 - 2018	192	177	213	213	187	198	196	180	199	187	184	200	210	2536
2018 - 2019	200	205	177	212	221	194	198	193	177	199	185	173	192	2526
2019 - 2020	197	213	204	176	220	230	194	195	190	177	197	174	166	2533
2020 - 2021	193	210	212	203	182	229	230	191	192	190	175	185	167	2559
2021 - 2022	189	205	209	211	210	189	229	227	188	192	188	164	178	2579
2022 - 2023	185	201	204	208	219	218	189	226	224	188	190	177	157	2586
2023 - 2024	181	197	200	203	216	228	218	187	223	224	186	178	170	2611
2024 - 2025	177	193	196	199	210	224	228	215	184	223	221	175	171	2616
2025 - 2026	174	189	192	195	206	218	224	225	212	184	220	208	168	2615

Enrollment

PDE Capacity

SCHOOL	PDE CAPACITY	FUNCTIONAL CAPACITY
Newville Elementary School	450	428
Mount Rock Elementary	450	428

Staffing History



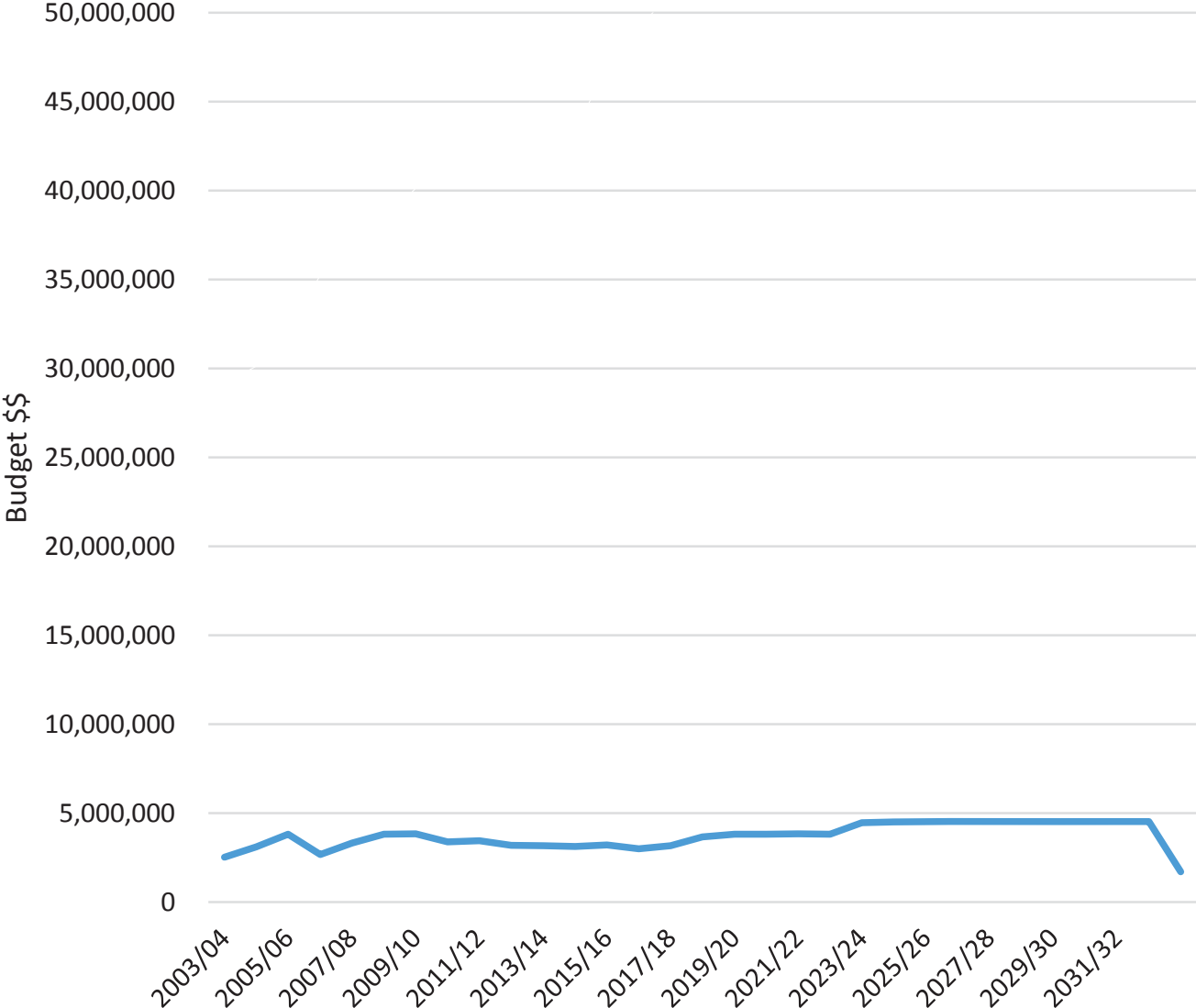
Newville Construction Work

- 1963 – Construction
- 2007 – Well Field / HVAC
- 2011 – Classroom Expansion
- 2012 – Roof Replacement

A History of Stewardship

PROJECT	Date	CapProj\$	Bond
HS Build	2003		\$32,250,000
MS Reno	2003		\$10,120,000
DAO Reno	2003		\$1,215,000
MR Elem	2005		\$3,525,000
NV Elem geothermal	2005		\$8,420,000
Plainfield New Build	2012		cancelled
NV Expansion	2012		\$3,275,000
Newville Roof Replacement	2012	\$502,931	
OF Roof Replace / MR Repair	2012	\$442,212	
MS / DAO Window Project	2013	\$690,079	
OF PC - HVAC	2014		\$3,784,038
HS Pool Roof	2015	\$524,657	
OF PC -CO2 Security EBI	2015		\$174,805
OF PC -CO3 HS PoolPak	2016	\$568,053	
MR / MS / DAO Roof Restoration	2016	\$782,946	
Stadium Renovation	2016		\$2,196,773
Track & Field Build	2017		\$2,200,000
MS Roof Replacement	2017		\$1,376,700

Debt Service



District Five Year Plan - Future

- 2017
 - Middle School Roof
 - Track & Playing Field
 - Newville Asbestos Abatement
 - MS Gym Floor renovation
- 2018
 - Newville Renovation & Additions, add generator
 - High School Roof Coating
 - Middle School Courtyard
 - Final Phase of District-wide Blacktop plan
 - Back Up Power Update (in coord w/ NV, MS & MR)
 - HS Auditorium Sound System
- 2021
 - Mount Rock Renovation (Asbestos Abatement)
- 2022
 - Mount Rock Renovation (Windows, Roof, Flooring, HVAC, Classrooms)
 - Replace MR Roof
 - Middle School Auditorium & LGI Renovations
 - High School STEM Wing

Critical Changes

- School Closures
 - Mifflin Elementary: 2006-2007 (last year)
 - Frankford Elementary: 2006-2007 (last year)
 - Plainfield Elementary: 2010-2011 (last year)
- Full Day Kindergarten: September 2008
- School Safety Efforts